



# Haier

\*State rebates shown in red

## Advanced Plus Single-Zone Series (-15)



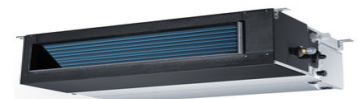
- **AW09AP2HDB** – 9000BTU ADVANCED PLUS WALL MOUNTED INDOOR UNIT
- **AW12AP2HDB** – 12000BTU ADVANCED PLUS WALL MOUNTED INDOOR UNIT
- **AW18AP2HDB** – 18000BTU ADVANCED PLUS WALL MOUNTED INDOOR UNIT
- **AW24AP2HDB** – 24000BTU ADVANCED PLUS WALL MOUNTED INDOOR UNIT
- **1U09AP2HDB** – 9000BTU ADVANCED PLUS OUTDOOR UNIT (VT-\$350)
- **1U12AP2HDB** – 12000BTU ADVANCED PLUS OUTDOOR UNIT (VT-\$350)
- **1U18AP2HDB** – 18000BTU ADVANCED PLUS OUTDOOR UNIT (VT-\$350)
- **1U24AP2HDB** – 24000BTU ADVANCED PLUS OUTDOOR UNIT (VT-\$350)

## Next Gen Arctic Series -31F



- **AW09EH2HEB** – 9000BTU ARCTIC WALL MOUNTED INDOOR UNIT
- **AW12EH2HEB** – 12000BTU ARCTIC WALL MOUNTED INDOOR UNIT
- **AW18EH2HEB** – 18000BTU ARCTIC WALL MOUNTED INDOOR UNIT
- **1U09EH2HEB** – 9000BTU ARCTIC OUTDOOR UNIT (VT-\$350)
- **1U12EH2HEB** – 12000BTU ARCTIC OUTDOOR UNIT (VT-\$350)
- **1U18EH2HEB** – 18000BTU ARCTIC OUTDOOR UNIT (VT-\$350)

*Arctic Next Gen models now work with consoles, cassettes and mid static ducts*





# Haier

\*State rebates shown in red

---

## Tempo Single Zone Series -5F



- AW09TC2HDA- 9000BTU FLEXFIT WALL MOUNTED INDOOR UNIT

- 1U09TE2HDA- 9000BTU TEMPO SINGLE ZONE OUTDOOR UNIT (No Rebate)

- AW12TC2HDA- 12000BTU FLEXFIT WALL MOUNTED INDOOR UNIT

- 1U12TE2HDA- 12000BTU TEMPO SINGLE ZONE OUTDOOR UNIT (No rebate)

- AW18TC2HDA- 18000BTU FLEXFIT WALL MOUNTED INDOOR UNIT

- 1U18TE2HDA- 18000BTU TEMPO SINGLE OUTDOOR UNIT (\$350)

---

## TEMPO LOW AMBIENT COOLING (Heating -5, Cooling -40F)



- AW24TL2HFA-24000BTU TEMPO LOW AMBIENT INDOOR UNIT

- 1U24TL2HFA- 24000BTU TEMPO LOW AMBIENT OUTDOOR UNIT (VT\$350)

- AW30TL2HFA-30000 TEMPO LOW AMBIENT INDOOR UNIT

- 1U3036TL2HFA-30000/36000 TEMPO LOW AMBIENT OUTDOOR UNIT (VT\$450)

- AW36TL2HFA- 36000 TEMPO LOW AMBIENT INDOOR UNIT

*THESE UNIT WILL NEED WIND BAFFLES AND SNOW HOODS TO ACHIEVE LOW AMBIENT COOLING*

WIND BAFFLE- UAWB46A  
SNOW HOOD- UAWB82A



# Haier

## Flex Fit Multi-Zone Series (-4F)



- **AW07TC2HDA** – 7000BTU FLEXFIT WALL MOUNTED INDOOR UNIT
- **AW09TC2HDA** – 9000BTU FLEXFIT WALL MOUNTED INDOOR UNIT
- **AW12TC2HDA** – 12000BTU FLEXFIT WALL MOUNTED INDOOR UNIT
- **AW18TC2HDA** – 18000BTU FLEXFIT WALL MOUNTED INDOOR UNIT
- **AW24TC2HDA** – 24000BTU FLEXFIT WALL MOUNTED INDOOR UNIT
- **2U18MS2HDA** -2 ZONE 18000BTU FLEXFIT OUTDOOR UNIT (VT-\$350)
- **3U24MS2HDA** – 2/3 ZONE 24000BTU FLEXFIT OUTDOOR UNIT (VT-\$350)
- **4U36MS2HDA** – 2/4 ZONE 36000BTU FLEXFIT OUTDOOR UNIT (VT-\$450)
- **5U42MS2HDA**- 2/5 ZONE 42000BTU FLEXFIT OUTDOOR UNIT (VT-\$450)

## Arctic Multi-zone series (-15F) Flexfit wall mounted indoor units to be used



- **AW07TC2HDA** - 7000BTU FLEXFIT WALL MOUNTED INDOOR UNIT
- **AW09TC2HDA** – 9000BTU FLEXFIT WALL MOUNTED INDOOR UNIT
- **AW12TC2HDA** – 12000BTU FLEXFIT WALL MOUNTED INDOOR UNIT
- **AW18TC2HDA** – 18000BTU FLEXFIT WALL MOUNTED INDOOR UNIT
- **AW24TC2HDA** – 24000BTU FLEXFIT WALL MOUNTED INDOOR UNIT
- **2U20EH2HDA** – 2 ZONE 20000BTU ARCTIC OUTDOOR UNIT (VT-\$350)
- **3U24EH2HDA** – 2/3 ZONE 24000BTU ARCTIC OUTDOOR UNIT (VT-\$350)
- **4U36EH2HDA** – 2-4 zone 36000BTU Arctic Outdoor unit (VT - \$450)

Arctic and Flexfit Multi-zone cassette units (will work with either outdoor unit)



# Haier

\*State rebates shown in red

---

## Arctic and Flexfit Multi-zone console units. (will work with either outdoor unit)



- **USYF09UCDWA**— 9K FLEXFIT CONSOLE INDOOR UNIT
- **USYF12UCDWA**— 12K FLEXFIT CONSOLE INDOOR UNIT
- **USYF18UCDWA**— 18K FLEXFIT CONSOLE INDOOR UNIT

---

## Arctic and Flexfit Multi-zone cassette units. (will work with either outdoor unit)



- **AB09SC2VHA** — 9K FLEXFIT 2' X 2' INDOOR UNIT
- **AB12SC2VHA** — 12K FLEXFIT 2' X 2' INDOOR UNIT
- **AB18SC2VHA** — 18K FLEXFIT 2' X 2' INDOOR UNIT
- **PB-700IB** — PANEL FOR 2' X 2' CASSETTE

---

## Arctic and Flexfit Multi-zone mid static duct units. (will work with either outdoor unit)



- **USYM09UCDSA**-9KBTU MID STATIC DUCT INDOOR UNIT
- **USYM12UCDSA**-12KBTU MID STATIC DUCT INDOOR UNIT
- **USYM18UCDSA**-18KBTU MID STATIC DUCT INDOOR UNIT



# Haier

## Accessories

**QAWF01A - Wi-Fi Adapter**



**QACT17A — Wired Controller**



**WJ01X23925 — Line set Adapter**

**1/4 x 3/8**



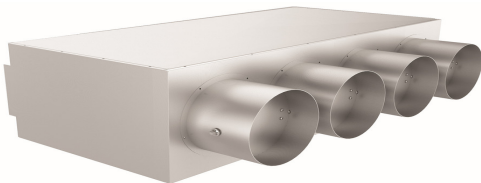
**WJ01X23924 — Line Set Adapter**

**3/8 x 5/8**



**UAPT0912A  
UAPT1824A**

Supply Plenums for mid static ducts



**UAMFB0912A  
UAMFB1824A**

Merv Filter boxes for mid static ducts

