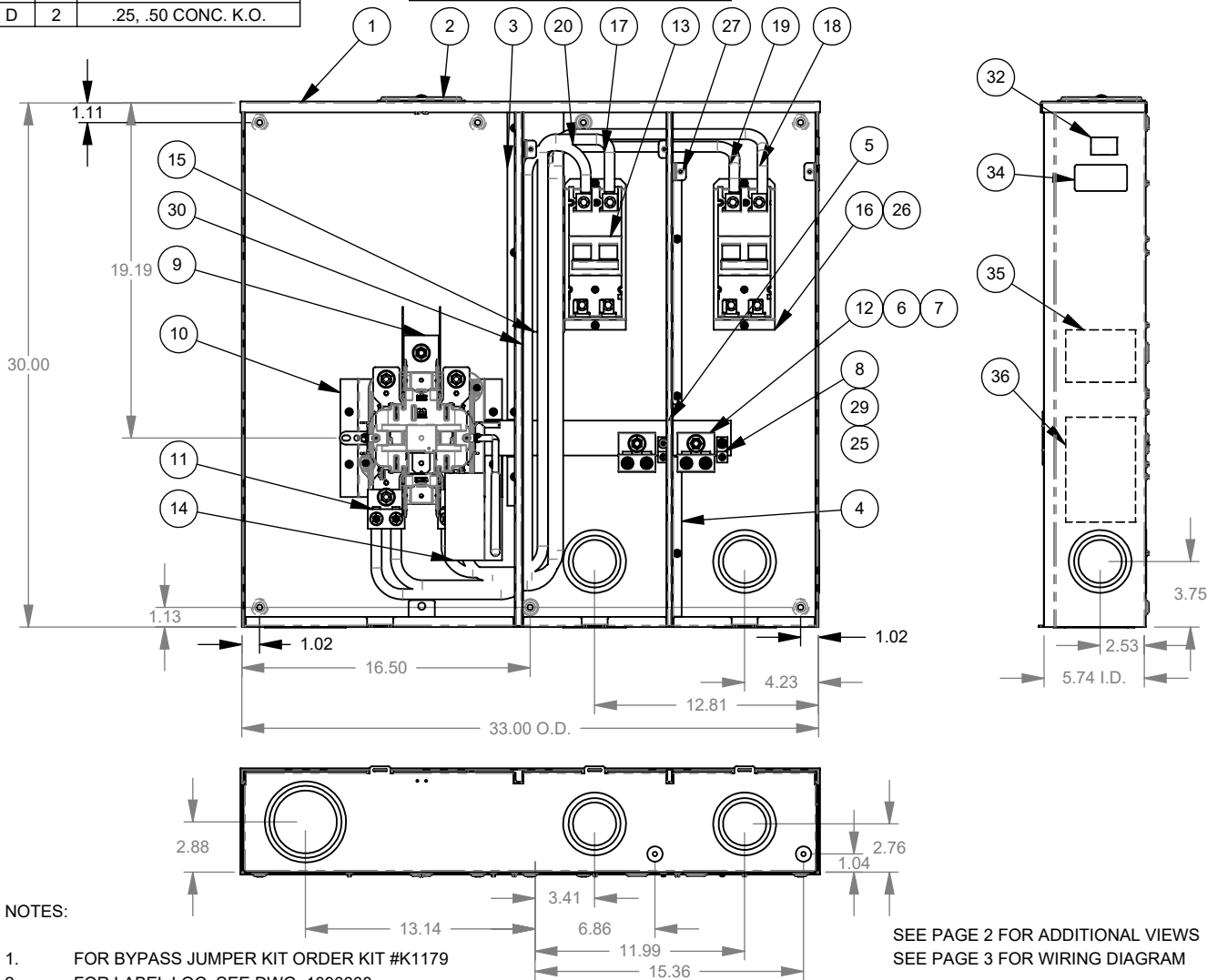


FEATURE TABLE		
ITEM	QTY	DESCRIPTION
A	6	U/L MOUNTING EMBOSS
B	1	3.00, 3.50, 4.00 CONC. K.O.
C	5	2.00, 2.50, 3.00 CONC. K.O.
D	2	.25, .50 CONC. K.O.

SUFFIX	CAT. LABEL
-2/200	1221251
-2/150	1221252
-200/100	1221253




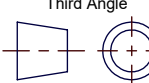
ITEM	QTY.	PART NUMBER	DESCRIPTION
1	1	1220993	SHELL WELDMENT
2	1	1001186	LARGE CLOSING PLATE
3	1	1221201	BARRIER WELDMENT
4	1	1220030	BARRIER WELDMENT
5	1	1221008	STACKED BUS ASSY
6	7	1001270	WASHER, 3/8 FLAT
7	7	1001273	NUT, 3/8-16 HEX W/BELL
8	2	1000199	CONNECTOR, 1/0, 1-POS.
9	1	1207232	STACKED BUS ASSY
10	1	1027677	BRIDGE & BLOCK ASSY
11	2	1026550	2 POS. 350kcmil CONC. ASSY
12	2	1007301	2 POSITION 350kcmil CONNECTOR
13	2	(SEE CHART)	2 POLE CIRCUIT BREAKER
14	1	1026045	INSULATOR
15	1	1223950	INSULATOR
16	2	1220509	RISER
17	1	1221023	40.0 WIRE 3/0 BLK
18	1	1221025	50.0" WIRE 3/0 BLK
19	1	1221022	51.5" WIRE 3/0 BLK
20	1	1221021	WIRE 3/0 44.0 BLK
21	1	1221073	FRONT ASSEMBLY
22	1	1220027	LEFT DEADFRONT
23	1	1220029	RIGHT DEADFRONT
24	2	1220022	RIGHT FRONT ASSY
25	4	1104528	SCREW 12-24 x .750
26	15	1000183	SCREW 12-24 x 5/16
27	4	1001290	SCREW, 10-32 X 5/16
28	1	1123646	SCREW 12-24 X 9/16 HX ST
29	5	1025012	WASHER .250, CONICAL
30	1	1001272	LABEL, BY-PASS INSTR. (LOC. BARRIER LEFT)
31	2	1025027	LABEL, ON/OFF TRIP
32	1	1047140	LABEL, U/L PANELBOARDS
33	2	1025109	LABEL, CIRCUIT BREAKER
34	1	(SEE CHART)	CATALOG LABEL
35	1	1025312	LABEL, SERIES ECMM (LOC. INSIDE RIGHT FRONT)
36	1	1028192	LABEL, WIRE RATING
37	3	1000064	LABEL, DANGER
38	2	1216354	LABEL EMERGENCY DISCONNECT
39	1	1219374	BAG ASSEMBLY (NOT SHOWN)
40	1	1000158	PAD WIREMAN, 8.37 x 7.50
41	1	1223524	CARTON 1-PER (NOT SHOWN)

NOTES:

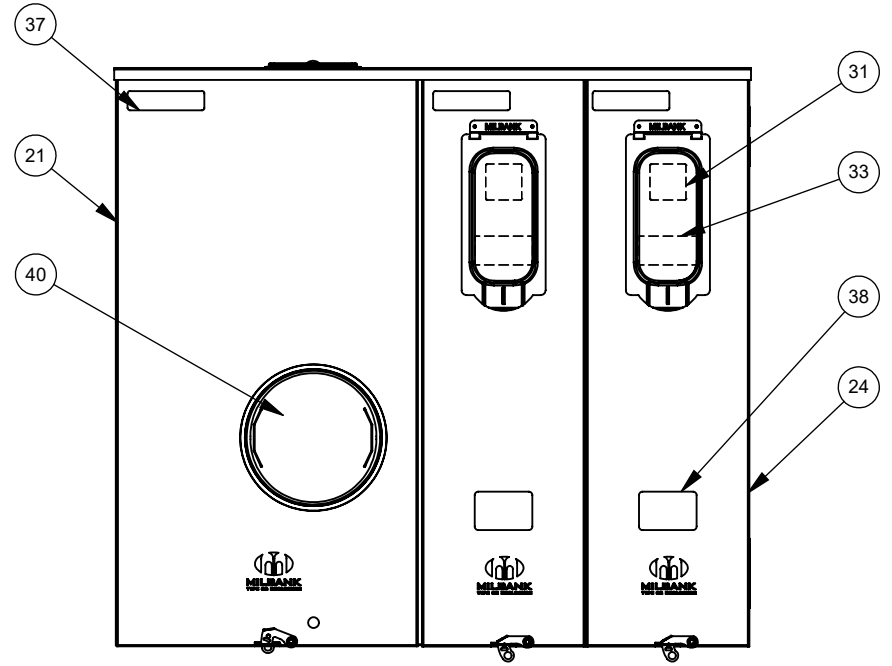
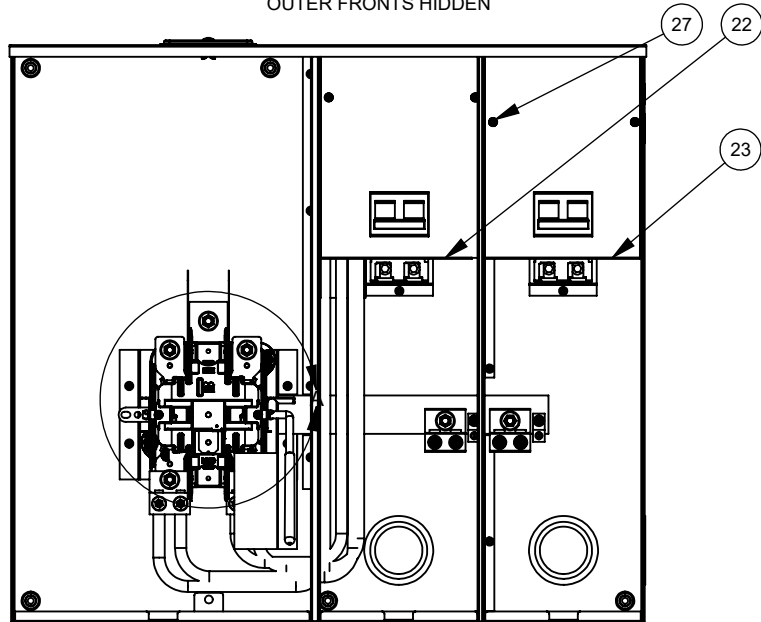
- FOR BYPASS JUMPER KIT ORDER KIT #K1179
- FOR LABEL LOC. SEE DWG. 1096668
- FOR FIELD INSTALLED FIFTH TERM. ASSY. ORDER KIT #K3865
- LEVER SUPPLIES CLAMPING ACTION ON METER SPADES AND ALSO OPERATES BYPASS DEVICE
- STUD TYPE UNITS ARE SUPPLIED WITH 3/8-16 HEX HEAD NUTS WITH BELLEVILLE WASHERS
  - FOR SINGLE LUG CONNECTORS ORDER KIT: #K1539 (350 kcmil) OR (600 kcmil)
- WHEN CAT. NO. HAS SUFFIX:
  - K3 - FACTORY INSTALL (3) #1028221 1 POS 350 kcmil CONNECTORS ON LINE STUDS
  - K2 - FACTORY INSTALL (3) #1026550 2 POS 350 kcmil CONNECTORS ON LINE STUDS
  - K3 - FACTORY INSTALL (3) #1025021 1 POS 600 kcmil CONNECTORS ON LINE STUDS

SEE PAGE 2 FOR ADDITIONAL VIEWS  
SEE PAGE 3 FOR WIRING DIAGRAM

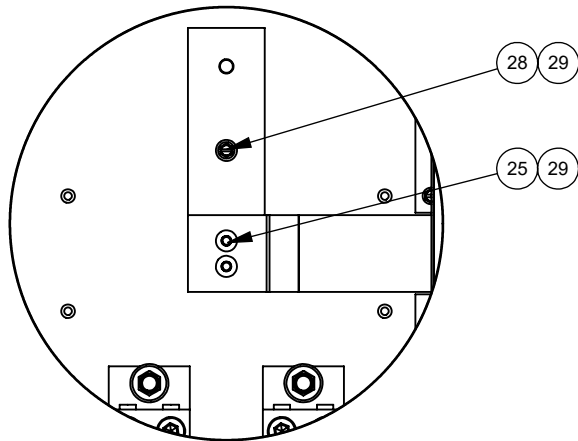
REV.	DATE	DESCRIPTION	ECO No.	BY
**	6/10/20	NEW	044843	SO

Material: 14 GA GALV. STEEL		 <p>KANSAS CITY, MO USA</p>
Shear/Die No.:	~ ~	
Finish:	MILBANK LIGHT GRAY	Title: 320A 4T RL HD LEVER BYPASS 3/8 STUD OU METER MAIN
Part Wt.:	95.994 LBS. EA.	
Square Inches:		Catalog No.: U6589-X(-) -BL
Tolerances: Unless Specified Otherwise X.X ±.1 X.XX ±.03 X.XXX ±.015 X* ±2*		
Scale:	NTS	Checked By: 
Drawn By:	SO	
Approved By:		Drawing No.: <b>6589</b>
Date:	06-10-20	Sheet: 1 of 3

DEADFRONT SHOWN  
OUTER FRONTS HIDDEN


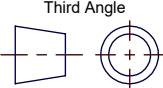


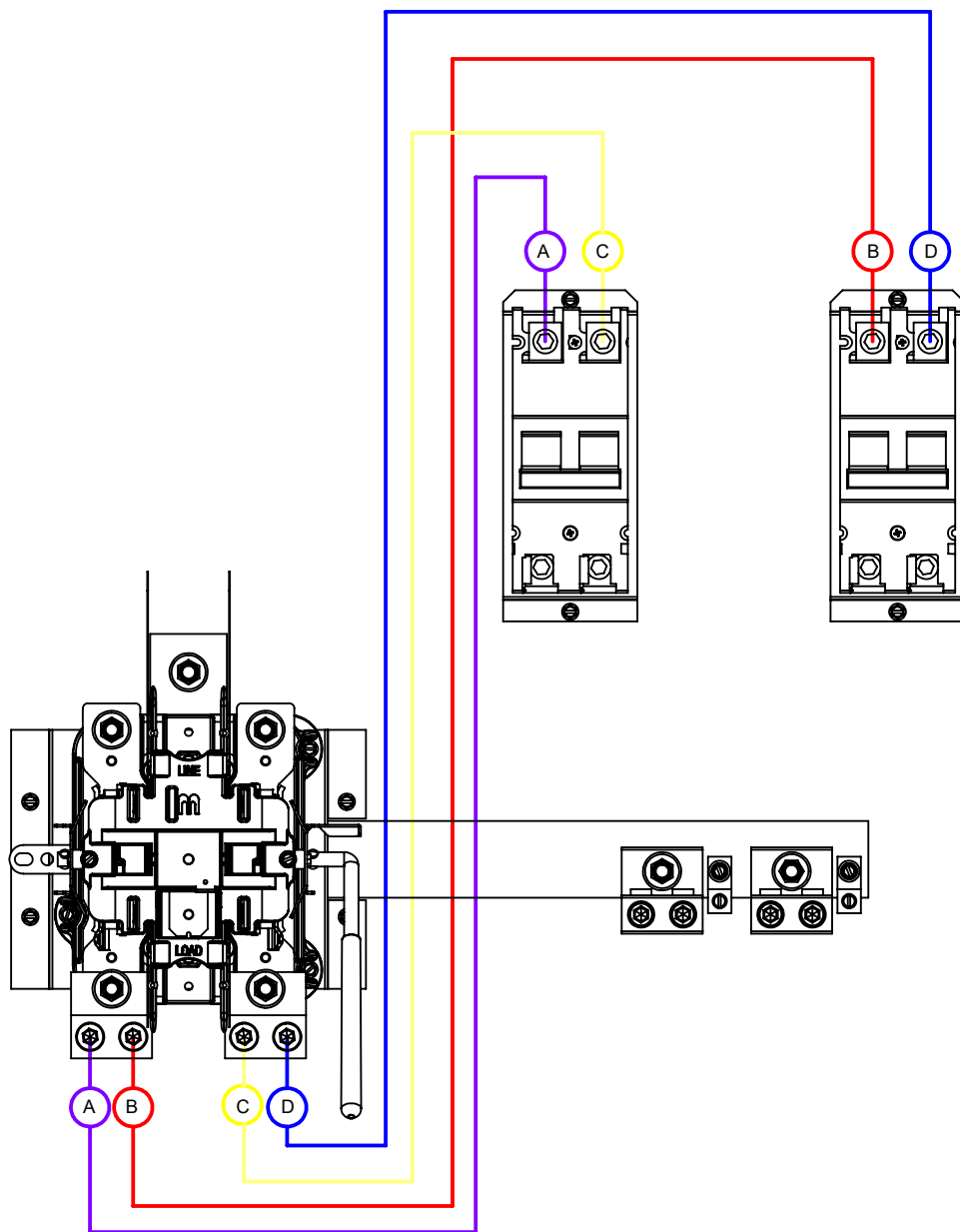
OUTER FRONTS SHOWN



DETAIL A  
SCALE 1 : 5

REV.	DATE	DESCRIPTION	ECO No.	BY
**	6/10/20	NEW	044843	SO


Material:	14 GA GALV. STEEL	 <p>KANSAS CITY, MO USA</p>	
Shear/Die No.:	~ ~		
Finish:	MILBANK LIGHT GRAY		
Part Wt.:	95.994 LBS. EA.		
Square Inches:		Title:	320A 4T RL HD LEVER BYPASS 3/8 STUD OU METER MAIN
Tolerances: Unless Specified Otherwise X.X ±.1 X.XX ±.03 X.XXX ±.015 X" ±2"		Catalog No.:	U6589-X-( )-BL
Scale: NTS Drawn By: SO		Customer:	
Third Angle 		Drawing No.:	6589
Checked By: Approved By:		Date:	06-10-20
		Sheet:	2 of 3



SUFFIX	BREAKER (13)
-2/200	1047697
-2/150	1047695
-200/100	1047697/1047693

WIRE	PART NO.	COLOR
A	1221021	PURPLE
B	1221022	RED
C	1221023	YELLOW
D	1221025	BLUE

ALL WIRES ARE 3/0 COPPER. ENDS ARE PAINTED AND MARKED WITH PAINT PEN DURING FINAL ASSEMBLY.

Material:	14 GA GALV. STEEL	 <p>KANSAS CITY, MO USA</p>	
Shear/Die No.:	~ ~		
Finish:	MILBANK LIGHT GRAY		
Part Wt.:	95.994 LBS. EA.		
Square Inches:		Title:	320A 4T RL HD LEVER BYPASS 3/8 STUD OU METER MAIN
Tolerances: Unless Specified Otherwise X.X ±.1 X.XX ±.03 X.XXX ±.015 X" ±2"		Catalog No.:	U6589-X-( )-BL
Scale: NTS Third Angle		Customer:	
Scale:	NTS	Checked By:	
Drawn By:	SO	Approved By:	
Date:	06-10-20	Sheet:	3 of 3

REV.	DATE	DESCRIPTION	ECO No.	BY
**	6/10/20	NEW	044843	SO