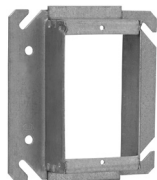


# Steel square covers

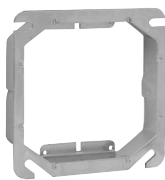
## TILE WALL COVERS FOR 4" SQUARE BOXES – CUBIC INCH CAPACITY (SEE BELOW)

UL LISTED

CSA LISTED



TP524



TP534



TP540

### Applications:

- Typically used with tile or brick

### Features:

- Rounded corners help guide cuts around devices

Cat. #	Description	Capacity cu. in.	Unit qty.	Wt. lbs. per 100
<b>One device</b>				
TP520	1/2" raised	3.7	50	30
TP522	3/4" raised	5.5	50	36
TP524	1" raised	7.4	50	40
TP526	1 1/4" raised	9.3	25	46
TP528	1 1/2" raised	11.0	25	50
TP530	2" Raised	14.8	25	62
<b>Two device</b>				
TP532	1/2" raised	5.0	10	24
TP534	3/4" raised	7.8	10	30
TP536	1" raised	10.3	10	36
TP538	1 1/4" raised	13.0	10	44
TP540	1 1/2" raised	15.5	10	50
TP542	2" raised	20.8	10	66

Steel boxes

## 4" SQUARE BOX PARTITIONS



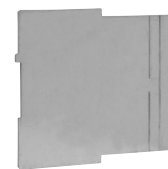
TP860



TP861



TP862



TP863

Cat. #	Description	Unit qty.	Wt. lbs. per 100
<b>For 1 1/2" deep box with square cut tile wall two gang covers</b>			
TP860	For 1/2", 3/4", 1" raised covers	25	13
TP861	For 1 1/4", 1 1/2", 2" raised covers	25	18
<b>For 2 1/8" deep box with square cut tile wall two gang covers</b>			
TP862	For 1/2", 3/4", 1" raised covers	25	16
TP863	For 1 1/4", 1 1/2", 2" raised covers	25	21