



# Southwire™

## EZLB™

EZ as 1-2-3! Southwire's EZLB™ Service Entrance Conduit Body provides the most efficient method of installing large service entrance wire through a right angle opening. No more struggling to force the wire into a tight connection. Our patented 3-piece design allows the installer plenty of room to maneuver the wire into place. Splitting the conduit body in half has eliminated the pinch points that have caused electricians problems for decades. The EZLB™ Service Entrance Conduit Body is a one man installation saving time, money, and eliminating wire damage.

### The EZLB installs in just 3 simple steps:

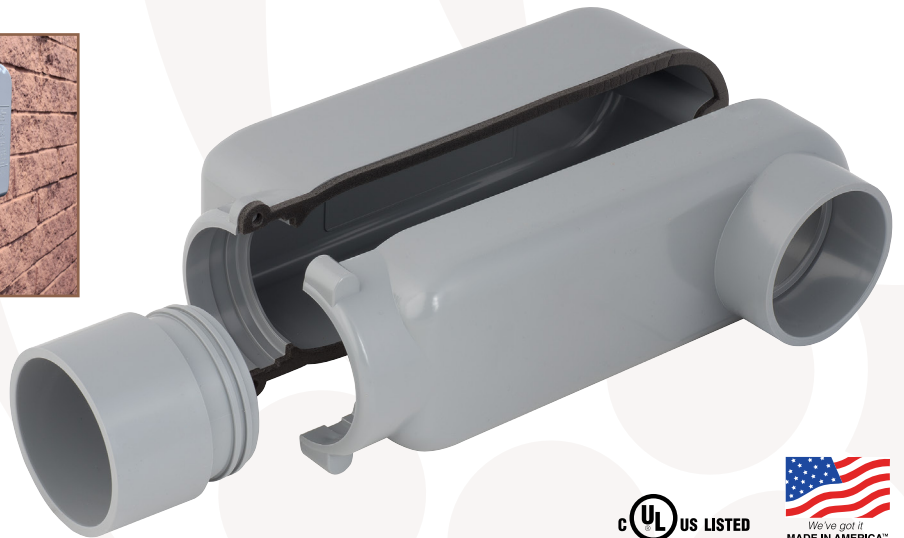
1. Install the collar fitting onto 2" PVC pipe.
2. Bend wire at 90 degrees and install into the back half of the conduit body.
3. Finish by installing the front cover.



1

2

3



MODEL #	UPC	DESCRIPTION	HEIGHT	WIDTH	LENGTH	WEIGHT	TRADE SIZE	MASTER QTY	MASTER WEIGHT
EZLB200	784297023071	Service Entrance Conduit Body	4.75"	3.00"	11.38"	1.55 lbs.	2"	2	3.10 lbs.

**BUILT FOR DURABILITY.  
BUILT FOR RELIABILITY.  
BUILT FOR WORK.™**

1-855-798-6657 | SOUTHWIRE.COM

©2021 Southwire Company, LLC. All rights reserved.  
®/TM - ®Registered Trademark and ™Trademark of Southwire Company, LLC