

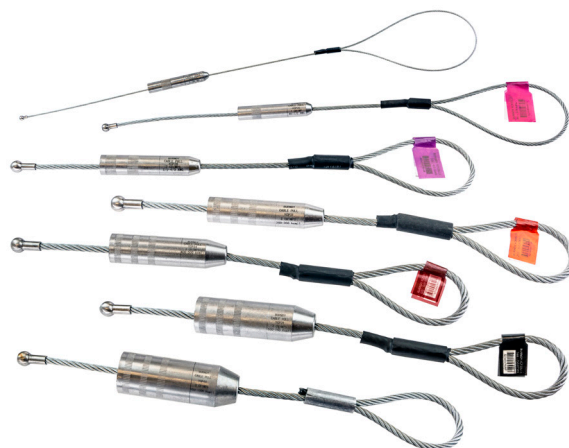
Compression Cable Pulling Heads Type YCP-L

TYPE YCP-L Compression Cable Pulling Heads

Before using this product, it is required to read, understand, and comply with the Safety Operation Maintenance & Installation manual provided with the product.

Features & Benefits

- Range-taking; only 7 compression pulling heads are required to pull #8 AWG through 1000 kcmil wire
- Accommodates:
 - Copper Class B (Concentric, Compressed, Compact) or Class C wire
 - Aluminum Class B (Concentric, Compressed, Compact)
- Easy to install with the 644 or 444S Series of dieless installation tools (PAT644 / Y644 or PAT444S)
- Parallel installation; each of the 7 compression pulling heads come in multiple lanyard lengths for staggering when pulling multiple wires
- Knurl crimp bands on the compression pulling head barrels clearly indicate the crimp zone location
- Each lanyard has a protective sleeve for comfort and safety
- A UPC tag is affixed to each part for ease of identification and ordering



PAT644 Series



PAT444S Series

Please Note: Sold packaged in quantities of 6 pieces; must order in multiples of 6.

Catalog Number	Barrel OD (in)	Wire Range (Cu & AL)	Lanyard Length (in)	Maximum Rated Pull Load per Cable (lbs)				Minimum Wire Strip Length (in)
				Wire Size	Copper (Concentric, Compress, Compact) Wire	Aluminum (Concentric, Compress, Compact) Wire	Dieless Installation Tooling (# of Crimps)	
YCP4CL13CTN	0.38	#8 - #4 AWG	13"	#8 AWG #6 AWG #4 AWG	130 210 300	130 210 300	644 Series 444S Series (1)	1.38"
YCP4CL20CTN			20"					
YCP4CL27CTN			27"					
YCP4CL34CTN			34"					
YCP25L13CTN	.51"	#4 - 1/0 AWG	13"	#4 AWG #3 AWG #2 AWG #1 AWG 1/0 AWG	300 400 500 1,200 1,200	300 400 400 400 400	644 Series 444S Series (1)	2.50"
YCP25L20CTN			20"					
YCP25L27CTN			27"					
YCP25L34CTN			34"					
YCP25L41CTN			41"					
YCP28L13CTN	.69"	2/0 AWG 3/0 AWG 4/0 AWG	13"	2/0 AWG 3/0 AWG 4/0 AWG	1,200 2,000 2,000	400 750 1,000	644 Series 444S Series (2)	3.00"
YCP28L20CTN			20"					
YCP28L27CTN			27"					
YCP28L34CTN			34"					
YCP28L41CTN			41"					
YCP31L13CTN	.88"	250 kcmil 300 kcmil 350 kcmil	13"	250 kcmil 300 kcmil 350 kcmil	2,000 4,000 4,000	1,200 1,500 1,800	644 Series 444S Series (3)	3.25"
YCP31L20CTN			20"					
YCP31L27CTN			27"					
YCP31L34CTN			34"					
YCP31L41CTN			41"					

Compression Cable Pulling Heads Type YCP-L

TYPE YCP-L (Continued)



PAT444S Series



PAT644 Series



Catalog Number	Barrel OD (in)	Wire Range (Cu & AL)	Lanyard Length (in)	Maximum Rated Pull Load per Cable (lbs)				Minimum Wire Strip Length (in)
				Wire Size	Copper (Concentric, Compress, Compact) Wire	Aluminum (Concentric, Compress, Compact) Wire	Dieless Installation Tooling (# of Crimps)	
YCP34L13CTN	1.06"	400 kcmil 450 kcmil 500 kcmil	13"	400 kcmil 450 kcmil 500 kcmil	4,000 5,000 5,000	2,000 2,400 2,700	644 Series 444S Series (3)	3.25"
YCP34L20CTN			20"					
YCP34L27CTN			27"					
YCP34L34CTN			34"					
YCP34L41CTN			41"					
YCP39L13CTN	1.30"	550 kcmil 600 kcmil 650 kcmil 700 kcmil 750 kcmil	13"	550 kcmil 600 kcmil 650 kcmil 700 kcmil 750 kcmil	5,000 5,000 5,000 5,000 5,000	3,600 3,600 3,600 3,600 3,600	644 Series 444S Series (3)	3.25"
YCP39L20CTN			20"					
YCP39L27CTN			27"					
YCP39L34CTN			34"					
YCP39L41CTN			41"					
YCP44L13CTN	1.50"	800 kcmil 900 kcmil 1000 kcmil	13"	800 kcmil 900 kcmil 1000 kcmil	5,000 5,000 5,000	3,600 3,600 5,000	644 Series 444S Series (3)	3.25"
YCP44L20CTN			20"					
YCP44L27CTN			27"					
YCP44L34CTN			34"					
YCP44L41CTN			41"					

Installation Table using 750 or 46 Series Tooling

PAT750 Series



PAT46S Series



Catalog Number **	Barrel OD (in)	Wire Range (Cu & AL)	Maximum Rated Pull Load per Cable (lbs)					Minimum Wire Strip Length (in)
			Wire Size	Copper (Concentric / Compress) Wire	Copper Compact Wire	Aluminum (Concentric, Compress, Compact) Wire	750 & 46 [†] Series Installation Tooling (# of Crimps)	
YCP25L**CTN	.51"	1/0 AWG	1/0 AWG	1,200	550	400	U25RT (1)	2.50"
YCP28L**CTN	.69"	4/0 AWG	4/0 AWG	2,000	1,000	1,000	U28RT (2)	3.00"
YCP31L**CTN	.88"	350 kcmil	350 kcmil	4,000	1,400	1,800	U31RT (3)	3.25"
YCP34L**CTN	1.06"	500 kcmil	500 kcmil	5,000	2,200	2,700	U34RT (3)	3.25"
YCP39L**CTN	1.30"	750 kcmil	750 kcmil	5,000	2,200	3,600	U39RT (3)	3.25"
YCP44L**CTN	1.50"	1000 kcmil	1000 kcmil	5,000	2,200	5,000	U44XRT (3)	3.25"

** Lanyard length needs to be added for complete catalog number. Example: YCP34L13 is 13" Lanyard Length.

[†]46 Series requires PUADPI adapter to use U dies.