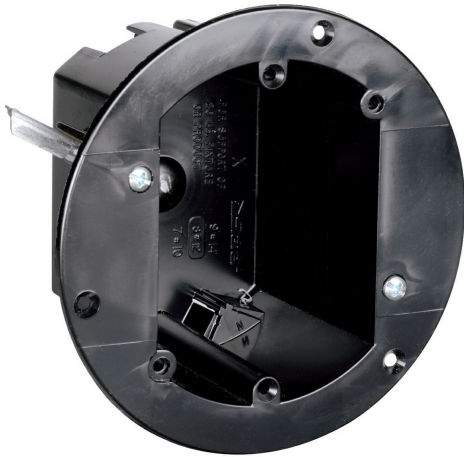




Pass and Seymour
3.75-inch Round Old Work Box
Part No. C118WAC



3 3/4-inch Round Old Work Box with Swing brackets for mounting that adjust from 1 1/4-inch down to 1/8-in. Four Auto/Clamps, Includes Device mounting holes. 50 pack.

Features & Benefits

Box designed so mounting strap of the device, with plaster ears removed, fits flush, allowing use of standard depth wall plate without unsightly gap between plate and wall surface.

New longer swing brackets have greater reach to clamp onto oversize cutouts.

Combination slotted/Phillips head swing bracket screws.

Suitable for in-wall use.

Includes device mounting holes.

Swing out wing brackets permit installation of box in wall with 1 1/4 inch thick wallboard down to 1/8 inch thick paneling.

Made of high impact thermoplastic.

Include exclusive Auto/Clamp feature.

Suitable for in-ceiling use for supporting weights up to up to 6 lbs.

For covering patents, see www.legrand.us/patents.

Specifications

General Info

Product Line	Pass & Seymour	Color	Black
UPC Number	785007206876	Country Of Origin	United States
Construction	Noryl Thermoplastic	Features	Recessed, Swing Out
Application Sector	Residential/Commercial	Standard	UL Listed
Type	Ceiling Box, Wall Box		

Listing Agencies / 3rd Party Agencies

cULus ListingNumber	E143223	cULus Listed	Yes
---------------------	---------	--------------	-----

Additional Information

RoHS Conformant	Yes	Product Environmental Profile	Yes
-----------------	-----	-------------------------------	-----

Technical Information

Indoor/Outdoor	Indoor	Mounting Type	Screw-on Mount
----------------	--------	---------------	----------------
