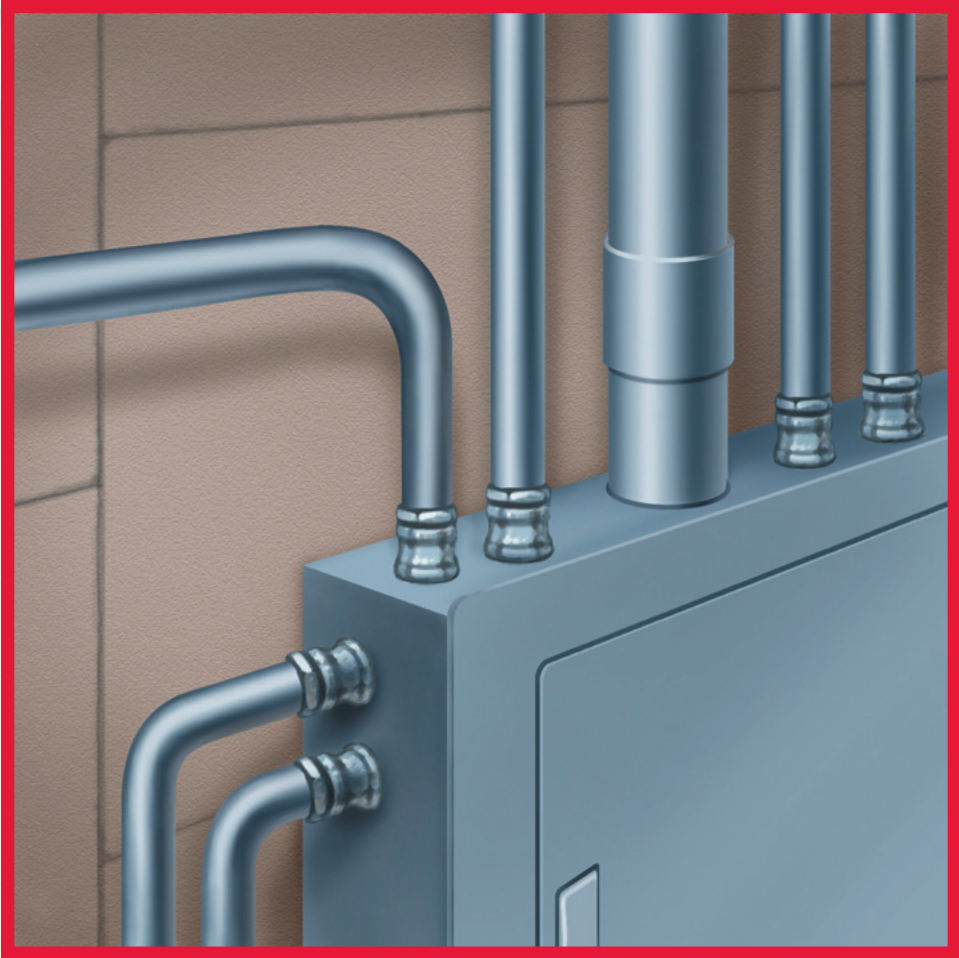


# Electrical Conduit and EMT Fittings

*Nipples, Elbows and Couplings*



**Wheatland** Tube

JMC STEEL GROUP

## Always The Best Fit



Wheatland manufactures a full line of complementary tubular fittings — nipples, elbows, couplings and running thread — made from the same materials as our raceways. RMC nipples are a shorter length of RMC and are threaded on both ends. Elbows are bent sections of conduit or tubing and are an important element of a raceway installation. Like our nipples, our elbows are threaded on both ends. Couplings are ID threaded from metal stock that has its ID sized, so when threaded, it will mate with the OD threads of the conduit. The pitch of conduit threads conforms to the American National Standard for Pipe Threads, General Purpose (Inch), ANSI/ASME B1.20.1. The taper of threads is 3/4 inch per foot (1 in 16).

### The Winning Team

When the job needs to be done on time and within budget, rely on Wheatland, the only company in the industry that produces all of its fittings in house. Our in-house, hot-dip galvanizing process is the quality benchmark for the industry.

Most of our fittings are produced in-house, using the latest technology and equipment. This assures a complete quality system for your raceways, from start-to-finish. Experience. Quality. Total in-house capabilities. You and Wheatland. That's *the* winning team.

### Specifications

The same quality standards that cover our steel conduit and tubing also cover our nipples, elbows and

couplings. Wheatland's steel tubular fittings are manufactured in accordance with the applicable UL standard, Federal Specifications, and the American National Standards Institute C80 standard. All of our steel Rigid Metal Conduit fittings, RMC/IMC couplings, and Yard-Light elbows are galvanized and conduit threads conform to the American National Standard for Pipe Threads, General Purpose (Inch), ANSI/ASME B1.20.1.

Our aluminum RMC nipples, elbows and couplings adhere to the following standards: UL6A, Federal Specifications WW-C-540c and the American National Standards Institute C80.5.

Our steel RMC nipples, elbows and couplings adhere to the following standards: UL6, Federal Specifications WW-C-581 class 1, type A and the American National Standards Institute C80.1

Our steel IMC nipples and elbows adhere to the following standards: UL 1242, Federal Specifications WW-C-581 class 2, type A and the American National Standards Institute C80.6

Our steel EMT elbows adhere to the following standards: UL797, Federal Specifications WW-C-563 and the American National Standards Institute C80.3

Information on the weights, dimensions and packaging of our fittings are available in our product bulletins. For copies, please contact Wheatland's Marketing Department at [info@wheatland.com](mailto:info@wheatland.com).

# Rigid Steel Conduit Nipples - Galvanized

## Weights and Packaging

Length	CLOSE			1½"		2"		2½"		3"		3½"	
Trade Size	Length* (in.)	Standard Carton Quantity	Weight Per 100 lbs.	Standard Carton Quantity	Weight Per 100 lbs.	Standard Carton Quantity	Weight Per 100 lbs.	Standard Carton Quantity	Weight Per 100 lbs.	Standard Carton Quantity	Weight Per 100 lbs.	Standard Carton Quantity	Weight Per 100 lbs.
½	1½	25	6	25	8	25	12	25	15	25	19	25	22
¾	1¾	25	9	25	9	25	14	25	19	25	24	25	28
1	1½	25	16	--	--	25	22	25	28	25	36	25	43
1¼	1¾	25	22	--	--	25	28	25	37	25	47	25	55
1½	1¾	25	28	--	--	25	34	25	44	25	56	25	68
2	2	25	44	--	--	--	--	25	59	25	72	25	88
2½	2¾	B	84	--	--	--	--	--	--	B	100	B	120
3	2¾	B	118	--	--	--	--	--	--	B	130	B	157
3½	2¾	B	160	--	--	--	--	--	--	--	--	--	--
4	2¾	B	180	--	--	--	--	--	--	--	--	--	--
5	3	B	240	--	--	--	--	--	--	--	--	--	--
6	3½	B	350	--	--	--	--	--	--	--	--	--	--

\*Length reference is for Close Nipples only.

## Weights and Packaging

Length	4"		5"		6"		8"		10"		12"	
Trade Size	Standard Carton Quantity	Weight Per 100 lbs.	Standard Carton Quantity	Weight Per 100 lbs.	Standard Carton Quantity	Weight Per 100 lbs.	Standard Carton Quantity	Weight Per 100 lbs.	Standard Carton Quantity	Weight Per 100 lbs.	Standard Carton Quantity	Weight Per 100 lbs.
½	25	26	25	33	25	40	25	54	25	68	25	82
¾	25	34	25	43	25	52	25	73	25	89	25	109
1	25	49	25	64	25	78	25	109	25	138	25	166
1¼	25	66	25	84	25	100	25	136	25	176	25	216
1½	25	80	25	103	25	122	25	170	25	216	12	260
2	25	103	25	132	25	160	12	220	12	285	12	335
2½	B	150	B	197	B	240	B	329	B	422	B	505
3	B	200	B	260	B	300	B	411	B	528	B	630
3½	B	240	B	320	B	373	B	510	B	655	B	785
4	B	285	B	380	B	440	B	600	B	775	B	925
5	--	--	B	480	B	600	B	825	B	1055	B	1260
6	--	--	B	660	B	820	B	1125	B	1440	B	1720

Prices are available upon request for nipples in lengths longer than 12" or with special threading requirements.

# Steel Conduit

## EMT Elbows 90°

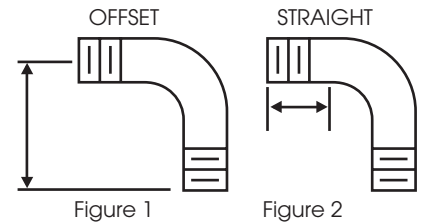
Trade Size	Min. UL Radius (in.)	Offset	Weight lbs.**		Std. Carton Qty.
			Per 100	Per Ctn.	
½	4	6¼	26	13	50
¾	4½	7⅞	46	23	50
1	5¾	9¼	92	23	25
1¼	7¼	10½	135	27	20
1½	8¼	12⅝	200	30	15
2	9½	14¼	280	28	10
2½*	10½	18⅞	500	250	50
3*	13	20	750	375	50
3½*	15	23¾	1014	355	35
4*	16	26⅞	1300	455	35

\*Trade sizes 2½ and larger shipped in palletized cartons or bulk.  
 \*\*Weights for Standard 90° elbows shown above are approximate.  
 To estimate weight for 60°, deduct 10%; for 45°, deduct 15%; for 30°, deduct 20%. Underwriters Laboratories, Inc. UL 797, American National Standards Institute, C80.3.

## Rigid/IMC Couplings - Galvanized Steel

Trade Size	Outside Diameter	Length* (in.)	Weight lbs.**		Std. Carton Qty.
			Per 100	Per Ctn.	
½	1.010	1⅝	12	12	100
¾	1.250	1 <sup>41</sup> / <sub>64</sub>	18	9	50
1	1.525	1 <sup>31</sup> / <sub>32</sub>	30	9	30
1¼	1.869	2⅝	37	9	25
1½	2.155	2⅞	52	13	25
2	2.650	2⅞	72	15	20
2½	3.250	3⅞	170	41	24
3	3.87	3⅞	210	34	16
3½	4.500	3 <sup>13</sup> / <sub>32</sub>	340	41	12
4	4.875	3 <sup>33</sup> / <sub>64</sub>	300	30	10
5	6.000	3 <sup>61</sup> / <sub>64</sub>	475	Bulk	Bulk
6	7.200	4¼	765	Bulk	Bulk

Manufactured to UL Specifications.  
 \*Minimum dimensions per UL 6.



## Rigid Steel Conduit Running Thread Pipe

Trade Size	Feet Per Carton	Weight lbs.**	
		Per 100 Ft.	Per Ctn.
½	102'	18	19
¾	102'	29	30
¾	102'	42	43
½	60'	62	37
¾	75'	85	64
1	60'	103	62
1¼	36'	141	51
1½	30'	180	54
2	24'	249	60
2½	12'	383	46
3	9'	496	45
3½	6'	631	38
4	6'	722	43

3 Foot Lengths: TYPE "C" Galvanized, Electro Plated Threads.

## Rigid Steel Conduit - Galvanized Elbows 90°

Trade Size	Min. UL Radius (in.)	Offset Fig. 1	Straight Fig. 2	Weight lbs.**		Std. Carton Qty.
				Per 100	Per Ctn.	
½	4	6⅞	1¼	70	35	50
¾	4½	7⅞	2¼	112	56	50
1	5¾	9½	2¼	192	48	25
1¼	7¼	11⅞	3	320	64	20
1½	8¼	12 <sup>13</sup> / <sub>16</sub>	3½	413	62	15
2	9½	15½	4	670	67	10
2½*	10½	19¼	4¾	1200	600	50
3*	13	21½	6	1900	665	35
3½*	15	24½	5½	2800	700	25
4*	16	25½	5¾	3100	775	25
5*	24	37⅞	8⅞	6800	Bulk	Bulk
6*	30	49½	13¼	11400	Bulk	Bulk

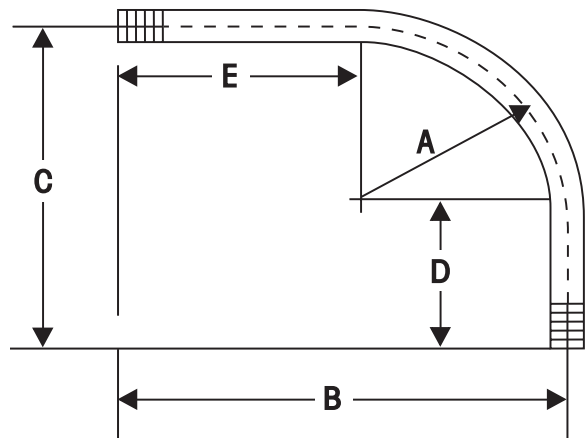
\*Sizes 2½ and larger shipped in palletized cartons or bulk. Palletized and Bulk elbows supplied with a thread protector on each end and UL label affixed.  
 \*\*Weights for Standard 90° elbows shown above are approximate. To estimate weight for 60°, deduct 10%; for 45°, deduct 15%; for 30°, deduct 20%.

# Rigid Steel Conduit Elbows - Galvanized

## Special Large Radius 90°

Trade Size	12" Radius	15" Radius	18" Radius	24" Radius	30" Radius	36" Radius	42" Radius	48" Radius
	Weight Each In Lbs.							
1	4	6	5	6	9	9	12	13
1¼	6	7	7	9	12	13	16	18
1½	8	9	10	11	15	16	19	21
2	10	10	11	14	20	22	24	26
2½	15	19	18	23	27	32	39	44
3	--	25	23	32	37	45	52	57
3½	--	Standard Radius	31	35	42	54	62	69
4	--	--	38	45	54	64	73	81
5	--	--	--	Standard Radius	85	94	100	120
6	--	--	--	--	Standard Radius	131	140	160

\*Weights for Special Large Radius 90° elbows shown above are approximate. To estimate weight for 60°, deduct 10%; for 45°, deduct 15%; for 30°, deduct 20%. Underwriters Laboratories, Inc. No. UL6, American National Standards Institute, C80.1.



## Yard-Light Elbows - Galvanized

Trade Size	Pieces Per Carton	Weight lbs.**	
		Per 100 Pcs.	Per Ctn.
½	25	150	38
¾	25	202	51
1	25	316	79
1¼	10	477	48
1½	5	609	30
2	Bulk	911	--
2½	Bulk	1530	--
3	Bulk	2279	--
3½	Bulk	3082	--
4	Bulk	3799	--

## Dimensions of Yard-Light Elbows - Galvanized

Trade Size	1/2	3/4	1	1¼	1½	2	2½	3	3½	4
A	4	4½	5¼	7¼	8¼	9½	10½	13	15	16
B	18	18	18	19¼	20½	21½	22½	25	27	28
C	6⅞	6¾	8⅞	10¼	11⅞	14½	16	19¼	22¾	24
D	2⅞	2¼	2⅞	3¼	3⅞	5	5½	6¼	7¼	8
E	14	13½	12¼	12¼	12¼	12	12	12	12	12

# INTERMEDIATE METAL CONDUIT ELBOWS

ALL DIMENSIONS PROVIDED ARE FOR DESCRIPTIVE PURPOSES ONLY~

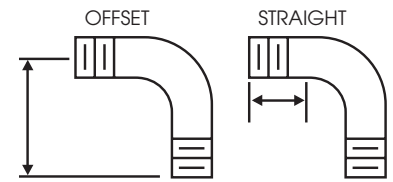


Figure 1

Figure 2

## IMC Elbows 90°

Trade Size	Radius **	Offset Fig. 1	Straight Fig. 2	Weight lbs.**		Std. Carton
				Per 100	Per Ctn.	
½	4"	6¾"	1¾"	52	26	50
¾	4½"	7⅝"	2¼"	82	41	50
1	5¾"	8⅞"	2¾"	136	34	25
1¼	7¼"	11½"	2⅝"	225	45	20
1½	8¼"	12¾"	2⅝"	306	46	15
2	9½"	15¼"	4"	480	48	10
*2½	10½"	19⅞"	4⅜"	900	450	50
*3	13"	24½"	7¾"	1500	525	35
*3½	15"	25¼"	6¾"	1800	450	25
*4	16"	25¾"	5½"	2000	500	25

\*Trade sizes 2½ and larger shipped in palletized cartons or bulk. Palletized and Bulk elbows supplied with a thread protector on each end and UL label affixed.

\*\*Minimum dimension per UL1242.

## IMC Elbows - Galvanized Special Large Radius 90°

Trade Size	12" Radius	15" Radius	18" Radius	24" Radius	30" Radius	36" Radius	42" Radius	48" Radius
	Weight Each In Lbs.							
1	3	4	5	6	7	8	9	10
1¼	4	5	6	7	9	10	11	12
1½	5	6	7	9	10	12	14	15
2	7	8	9	11	13	15	17	19
2½	11	13	15	18	21	24	28	31
3	--	16	18	22	26	30	34	38
3½	--	Standard Radius	320	25	30	34	39	44
4	--	--	23	29	34	38	44	49

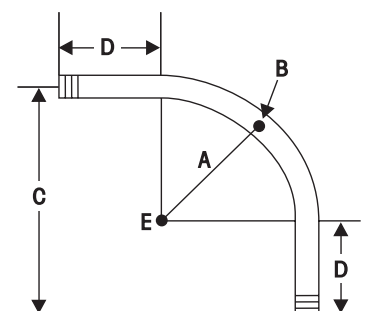
\*Weights for Standard and Special Large Radius 90° elbows are approximate. To estimate weight for 60°, deduct 10%; for 45°, deduct 15%; for 30°, deduct 20%. Underwriters Laboratories, Inc. No. 1242, American National Standards Institute, C80.6 where applicable.

## Dimensions of Special Large Radius 90° Elbows\*

Trade Size	1-2½	1-3	1-4	1-4	1-5	1-6	1-6	1-6
When Radius "A" is:	12"	15"	18"	24"	30"	36"	42"	48"
Offset "C" is:	1'9"	2'0"	2'4"	2'11"	3'5"	3'11"	4'6"	5'0"
Straight End "D" is:	9"	9"	10"	11"	11"	11"	12"	12"
Length Unbent is:	3'0"	3'6"	4'0"	4'11"	5'9"	6'6"	7'6"	8'4"

## Measuring Special Radius Elbows

Locate center of Elbow B. Subtract straight section D from each end and final find point E. Radius A is the distance between B and E.



Offset C is measured as shown.

\*Dimensions apply to 90° elbows only. Inquire for other Radii.

# ALUMINUM RIGID CONDUIT ACCESSORIES

ALL DIMENSIONS PROVIDED ARE FOR DESCRIPTIVE PURPOSES ONLY

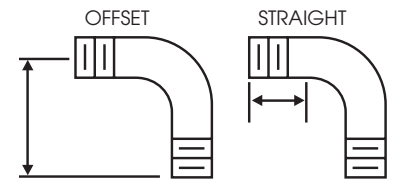


Figure 1

Figure 2

## Rigid Coupling - Aluminum

Trade Size	Outside Diameter	Length **	Weight lbs.**		Std. Carton Qty.
			Per 100	Per Ctn.	
1/2	1.078"	1 1/16"	6	6	100
3/4	1.328"	1 1/8"	9	5	50
1	1.562"	2"	13	4	30
1 1/4	1.953"	2 1/16"	19	5	25
1 1/2	2.219"	2 1/8"	23	6	25
2	2.750"	2 1/2"	35	7	20
2 1/2	3.281"	3 1/8"	68	16	24
3	3.812"	3 1/4"	91	15	16
3 1/2	4.438"	3 3/8"	108	13	12
4	5.000"	3 1/2"	142	14	10
5	6.219"	3 3/4"	242	--	Bulk
6	7.312"	4"	320	--	Bulk

Couplings manufactured to UL Specifications  
 \*\*Minimum dimension per UL 6A.

## Rigid Aluminum Conduit Elbows 90°

Trade Size	Radius **	Offset Fig. 1	Length Fig. 2	Weight lbs.**		Std. Carton Qty.
				Per 100	Per Ctn.	
1/2	4"	6 3/8"	1 3/4"	26	13	50
3/4	4 1/2"	7 7/16"	2 1/4"	40	20	50
1	5 3/4"	9 1/2"	2 3/4"	72	18	25
1 1/4	7 1/4"	11 3/8"	3"	105	21	20
1 1/2	8 1/4"	12 13/16"	3 1/2"	153	23	15
2	9 1/2"	15 1/2"	4"	210	21	10
*2 1/2	10 1/2"	19 1/4"	4 3/4"	500	250	50
*3	13"	21 1/2"	6"	800	280	35
*3 1/2	15"	24 1/2"	5 1/2"	900	225	25
*4	16"	25 1/2"	5 3/4"	1200	300	25
*5	24"	37 3/16"	8 3/8"	2400	--	Bulk
*6	30"	49 1/2"	13 1/4"	3800	--	Bulk

\*Trade Sizes 2 1/2 and larger shipped in palletized cartons or bulk. Palletized and Bulk elbows supplied with a thread protector on each end and UL label affixed.  
 \*\*Minimum dimension per UL 6A

## Rigid Aluminum Conduit Nipples

Length	CLOSE		1 1/2"		2"		2 1/2"		3"		3 1/2"		4"		5"		
	Trade Size	Length*	Std. Carton	Wt. Per 100	Std. Carton	Wt. Per 100	Std. Carton	Wt. Per 100	Std. Carton	Wt. Per 100	Std. Carton	Wt. Per 100	Std. Carton	Wt. Per 100	Std. Carton	Wt. Per 100	
1/2	1 1/8"	25	2	25	3	25	4	25	5	25	7	25	8	25	9	25	12
3/4	1 3/8"	25	3	25	3	25	5	25	7	25	8	25	10	25	12	25	15
1	1 1/2"	25	4	--	--	25	7	25	8	25	12	25	14	25	16	25	21
1 1/4	1 5/8"	25	7	--	--	25	10	25	13	25	16	25	20	25	23	25	29
1 1/2	1 3/4"	25	10	--	--	25	12	25	16	25	20	25	24	25	28	25	36
2	2"	25	16	--	--	--	--	25	22	25	27	25	32	25	38	25	48
2 1/2	2 1/2"	12	22	--	--	--	--	--	--	10	30	10	39	10	47	12	64
3	2 5/8"	12	24	--	--	--	--	--	--	10	42	10	53	10	64	10	86
3 1/2	2 3/4"	12	42	--	--	--	--	--	--	--	--	--	--	10	75	10	101
4	2 7/8"	12	51	--	--	--	--	--	--	--	--	--	--	10	87	10	118
5	3"	Bulk	71	--	--	--	--	--	--	--	--	--	--	--	--	Bulk	155
6	3 1/8"	Bulk	105	--	--	--	--	--	--	--	--	--	--	--	--	Bulk	208

\*Length reference is for Close Nipples only

## Rigid Aluminum Conduit Nipples

Length	6"		8"		10"		12"	
	Trade Size	Std. Ctn. Per 100	Std. Ctn. Per 100	Std. Ctn. Per 100	Std. Ctn. Per 100	Std. Ctn. Per 100	Std. Ctn. Per 100	
1/2	25	14	25	19	25	24	25	29
3/4	25	18	25	25	25	31	25	38
1	25	26	25	36	25	45	25	55
1 1/4	25	36	25	49	25	62	25	75
1 1/2	25	44	25	59	25	74	25	90
2	25	58	12	78	12	100	12	120
2 1/2	12	80	10	114	5	148	5	180
3	10	108	10	152	5	196	5	240
3 1/2	5	128	5	180	5	234	5	286
4	5	149	5	212	5	274	5	336
5	Bulk	197	Bulk	281	Bulk	366	Bulk	450
6	Bulk	263	Bulk	372	Bulk	481	Bulk	591

## Rigid Aluminum Conduit Special Large Radius 90° Elbows

Trade Size	12"	15"	18"	24"	30"	36"	42"	48"
	Radius	Radius	Radius	Radius	Radius	Radius	Radius	Radius
1	1	2	2	3	3	4	4	5
1 1/4	2	3	3	3	4	5	6	6
1 1/2	3	3	4	4	5	6	7	8
2	4	3	4	5	7	8	9	10
2 1/2	6	7	6	8	10	12	14	16
3	--	9	8	11	13	16	18	21
3 1/2	--	Standard Radius	11	14	16	19	22	25
4	--	--	14	16	19	23	26	29
5	--	--	--	Standard Radius	29	34	37	44
6	--	--	--	--	Standard Radius	42	49	58

\*WEIGHTS for Standard and Special Large Radius 90° elbows are approximate. To estimate weight for 60°, deduct 10%; for 45°, deduct 15%; for 30° deduct 20%. Aluminum nipples, elbows and couplings are manufactured in conformance to Underwriters Laboratories, Inc. Standard UL 6A and American National Standards Institute ANSI C80.5.



**JMC Steel Group**  
*Pipe and Tube Solutions*

Corporate Office  
227 West Monroe Street  
Chicago, IL 60606  
info@jmcsteelgroup.com  
jmcsteelgroup.com



**Wheatland Tube**  
JMC STEEL GROUP

700 South Dock Street  
Sharon, PA 16146  
Ph: 800.257.8182  
Fax: 724.346.7260  
info@wheatland.com  
wheatland.com

Wheatland produces a full line of listed electrical conduit, EMT and tubular fittings. We supply Steel and Aluminum Rigid Metal Conduit (RMC), Steel Intermediate Metal Conduit (IMC) and Steel Electrical Metallic Tubing (EMT). We also manufacture a full line of complementary tubular fittings made from the same materials as our raceways — nipples, elbows, couplings and running thread. (See Wheatland's individual product literature for specific product details.)

All Wheatland manufacturing locations' quality management systems are certified to the ISO 9001:2008 requirements.

For more information contact Wheatland's Electrical Sales Department at 800-257-8182, email: info@wheatland.com or visit our website at [www.wheatland.com](http://www.wheatland.com).



Made in U.S.A.