

Distributor Panelboard Box Stocking Program

The panelboard Box Stocking Program is designed to support distributor panelboard sales and service by providing the means to supply a back box immediately from stock and secure the required interior and trim later from a Satellite or main plant. The program flexibility enables our distributors to service the panelboard market and customers with a minimal investment and maximum capability. All authorized distributors are eligible. All boxes supplied on the Box Stocking Program are clearly labeled with the box catalog #, description, and UIC code (with bar code).

Distributor Cost

Distributor net prices are shown on Tab 3, page 4 for individual boxes available on this program. **These net prices are loaded in VISTALINE for each box on this program but must be ordered in the quantities shown.**

This program is available to all authorized Eaton distributors.

All box stock orders are shipped within 5 working days, freight prepaid and allowed.

Order Requirements

- Orders must be entered by the distributor via VISTALINE, VISTA on the Web, or EDI
- Order quantity of boxes required. Must be in carton quantities.
Example: EZB2048RBS – carton qty is 8, so orders would be for multiples of 8 (8,16,24, etc.).
- Boxes must be shipped to distributor's stock
- **Returns cannot be accepted**

Stock Replenishment

Distributor box stocks are not automatically replenished. The distributor has the flexibility to monitor his stock and reorder only as needed.

Pricing and Ordering Panelboards

Panelboards are priced and negotiated as if the entire panelboard is to be supplied from a satellite or plant. *There is no deduction for the box from the negotiated price on panelboard orders where the box has been supplied from distributor stock.*

If the panelboard box has been provided from distributor stock, then the panelboard order should be entered on Eaton without the box item included. This will reduce the jobsite material handling for the installing

contractor and prevent additional transportation and coordination required to return the unused box to the distributor. The procedure to omit the box item is shown below.

Step 1: Left click the mouse on the check box 'Box Provided by Distributor' that can be found under the Standard Mods tab of the Bid Manager panelboard take-off application (see figure 1)

Step 2: Once the panelboard is saved, the panel drawing will include a note indicating that the box is provided by the distributor (see figure 2). Provide the box size indicated from distributor stock.

Step 3: Send the panelboard order to Eaton. No box item will be created when the panelboard order is processed and no box will be shipped with the order.

Figure 1

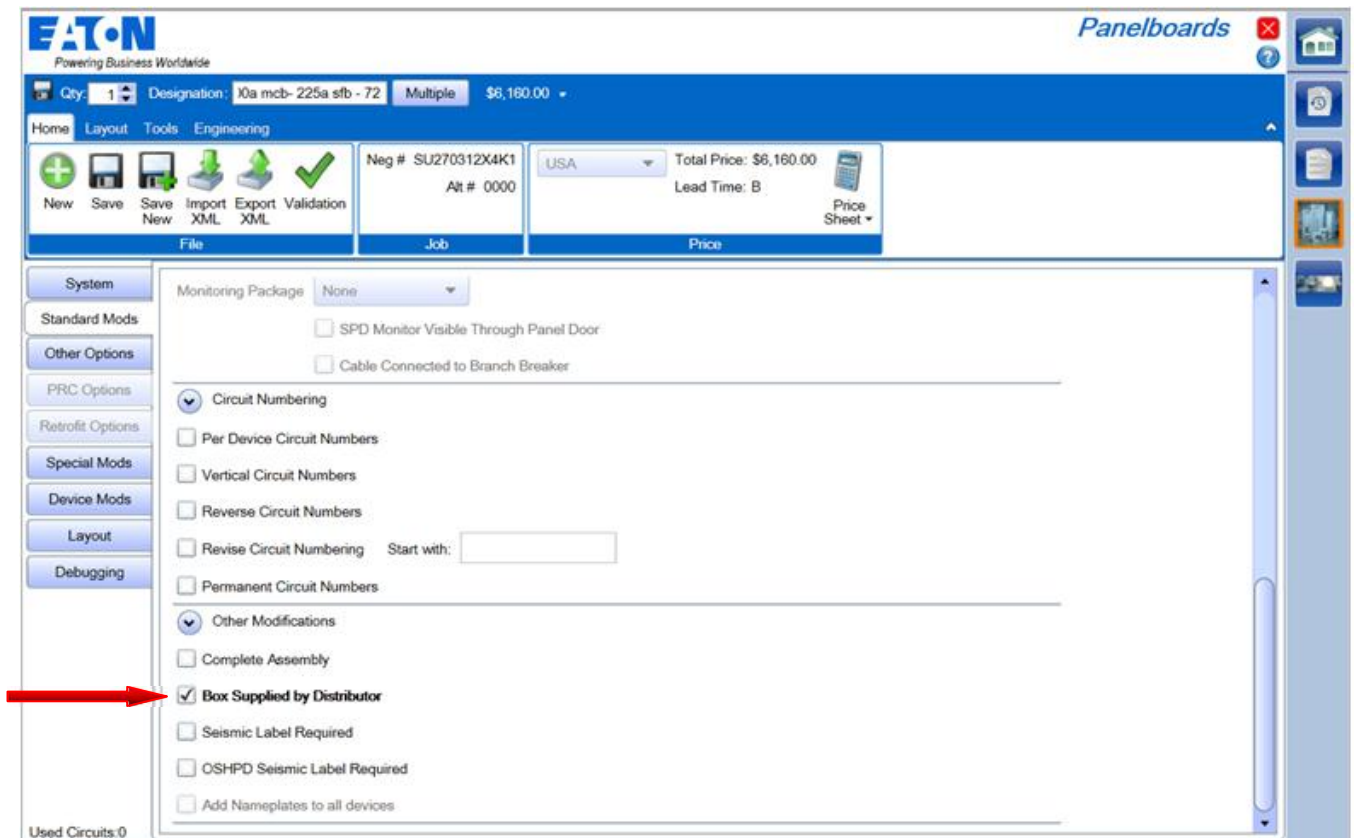


Figure 2

General Information		(Section 1 of 1)	
Service Voltage:	208Y/120V 3Ph 4W	Enclosure:	Type 1
Bus Rating & Type:	225A Aluminum	Neutral Rating:	225A
Ground Bar:	Std. Bolted Aluminum, Al or Cu cable		
S.C. Rating:	10k A.I.C. Fully Rated		
Main Device Type:	Main Lugs Only - Top Cable Entry		
Main Terminals:	Mechanical - (1) #6-300 kcmil (Cu/Al)		
Neutral Terminals:	Mechanical - (1) #6-300 kcmil (Cu/Al)		
Box Catalog No.:	No Box		
Trim:	EZ Trim, Door in Door, Concealed Hardware (EZT2042S)		
	Surface Mounted		
Box Dimensions:	42.00" [1066.8mm]H x 20.00" [508.0mm]W x 5.75" [146.1mm]D		
Min. Gutter Size:	Top = 5.5" [139.7mm] Bottom = 5.5" [139.7mm] Left = 6.0" [152.4mm] Right = 6.0" [152.4mm]		
Panel ID Nameplate:	(1) Box supplied by Distr		
Type:	Plastic, adhesive-backed	(2) 208Y/120V 3Ph 4W	
Color:	White with Black Letters	(3)	
NEC Lighting & Appliance, UL CTL ***Non-Interchangeable Main Device***			



Box Stocking Program Catalog Numbering System – EZ Boxes and BX Boxes

Notes:

- EZ boxes will only work with EZ trims.
- EZ boxes are currently only available in the standard 20” and 28” styles.

EZB 20 36 R BS (Standard) OR EZB 20 36 42 R BS (Mixed Pallet)
① ② ③ ④ ⑤ ① ② ③ ④ ⑤

- ① Box Type (EZB= EZ box for PRL1a, PRL2a, PRL3a panelboards)
- ② Box Width in inches
- ③ Box Height in inches
- ④ Hinge side for EZ trim (R = right hand)
- ⑤ BS = Distributor **B**ox **S**tocking Programs

Ordering Example: Distributor wants to order 8 - EZB2036RBS panel cans for distributor stock.

Place an order in VISTALINE, VISTA on the Web, or EDI for Qty: 8 EZB2036RBS

Box Stocking Program Cat #	NAED / UIC #	Cost Net Each	Carton Quantity (Multiples of)
EZB2036RBS	10782116895922	\$5	8
EZB2042RBS	10782116895939	\$5	8
EZB2048RBS	10782116895946	\$5	8
EZB2060RBS	10782116895953	\$5	8
EZB2072RBS	10782116895960	\$5	6
EZB2090RBS	10782116895977	\$5	6
EZB2848RBS	782116110063	\$10	3
EZB2860RBS	782116110070	\$10	3
EZB2872RBS	782116110087	\$10	3
EZB2890RBS	782116110094	\$10	3
BX2457PBS	10782116110244	\$25	2
BX2473PBS	10782116110251	\$25	2
BX2490PBS	10782116110268	\$25	2
BX3673PBS	10782116110275	\$25	2
BX3690PBS	10782116110282	\$25	2
BX4473PBS	10782116110299	\$25	2
BX4490PBS	10782116110305	\$25	2
**NOTE: It is <u>imperative</u> that distributors order the following mixed pallets by catalogue number only. Do <u>not</u> use bar codes for entry of these items.			
<i>EZB203642RBS</i>	10786685117706	\$5	8
	Consist of (4) EZB2036RBS & (4) EZB2042RBS		
<i>EZB203648RBS</i>	10786685117713	\$5	8
	Consist of (4) EZB2036RBS & (4) EZB2048RBS		
<i>EZB204248RBS</i>	10786685117720	\$5	8
	Consist of (4) EZB2042RBS & (4) EZB2048RBS		
<i>EZB204860RBS</i>	10786685117751	\$5	8
	Consist of (4) EZB2048RBS & (4) EZB2060RBS		
<i>EZB207290RBS</i>	10786685117744	\$5	6
	Consist of (3) EZB2072RBS & (3) EZB2090RBS		