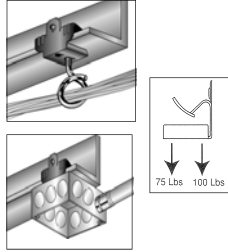


Spring Steel Beam Clamps

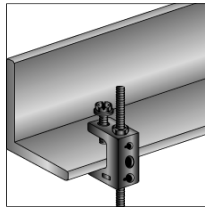
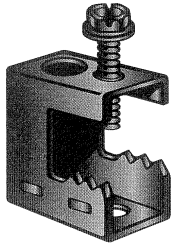


- Can be used to suspend boxes, fixtures & bridle rings to beam flanges 1/8" to 3/4" thick
- Beam Clamp with 1.4"-20 x 3/8" staked stud used to suspend box from bottom of beam
- Ultimate Static Load Limit: - 75 or 100 lbs. (see illustration)
- NOTE: Static load limits cannot be combined



Cat No.	Flange Thickness	Box Qty	Each
18012	1/8" - 1/4"	100	
18014	5/16 - 1/2"	100	

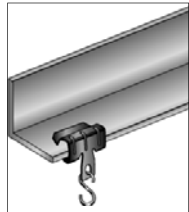
Spring Steel Beam Clamp



- Fast installation; fits beam flange to 1/2"
- Used with 1/4" and 3/8" threaded rod, "S" hooks, conduit hangers, electrical boxes, and #10-24 or 1/4"-20 bridle rings
- Static Load Capacity: 100 lbs.
- Tapping 1/4"-20 bottom & back
- Also #10-24 tapping on back

Cat No.	Flange Thickness	Drop Rod	Box Qty	Each
18016	Up to 1/2" thick	1/4"-3/8"	100	

Spring Steel Flange Beam Clamp

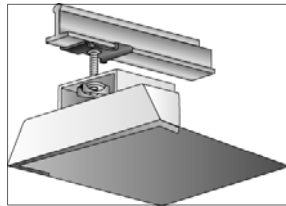


- Installed with hammer on bulb tees and beams
- Static Load Capacity of 200 lbs
- Clearance for 1/4" bolt in tab



Cat No.	Flange Thickness	Box Qty	Each
18018	1/8"-1/4"	100	
18020	5/16"-1/2"	100	

Spring Steel Twist On T-Bar Hanger

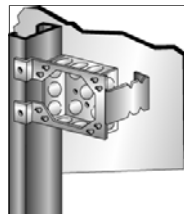
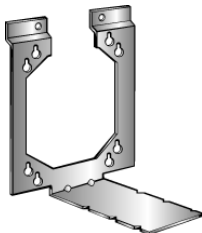


- Supports electrical fixtures to T-Bar 15/16" wide
- Assembled with 1" OD wing nut washer
- 1/4"-20 stud 5/8" long with wing nut washer



Cat No.	Box Qty	Each
18022	100	

Box Stabilizer Support

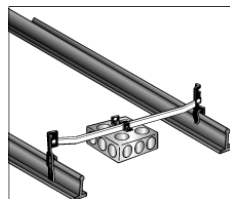
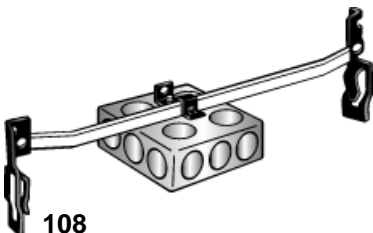


- Box Support for 2-1/2", 3-1/2" & 4" wood or metal studs
- Screw attached support for electrical boxes
- Made from pre-galvanized steel



Cat No.	Box Qty	Each
18052	100	

Box To T-Bar Fastener



- Snap-on 24" span box hanger with dual height adjustment allows flush or 3/4" offset mount
- 1 BBC mounting clip with screw included
- Zinc plated steel with spring steel hardware included



Cat No.	Box Qty	Each
18054	100	