

# Service Entrance & Grounding Fittings

## Service Entrance Elbows & Connectors

### SERVICE ENTRANCE ELBOWS – ALUMINUM

Gasketed

UL File No. E-15022



Cat. #	Trade Size	Unit Qty.	Std. Pkg.	Wt. Lbs. Per 100
SLB1	1/2"	10	50	25
SLB2	3/4"	10	50	30
SLB3	1"	5	25	51
SLB4	1 1/4"	2	10	83
SLB5	1 1/2"	1	5	117
SLB6	2"	1	5	192

### SERVICE ENTRANCE CABLE CONNECTORS – MALLEABLE IRON

Non-watertight for Oval Cable

UL File No. E-22134



Cat. #	KO Size	Clamp Opening Width		Wt. Lbs. Per 100
		Min.	Max.	
631	3/4"	33/64"	13/16"	14
			For 2 conductor Nos. 8, 6 3 conductor Nos. 8, 6	
632	1"	3/8"	1 1/64"	21
			For 2 conductor Nos. 8, 6 3 conductor Nos. 8, 6	

### SERVICE ENTRANCE CABLE CONNECTORS – ZINC DIE CAST

Non-watertight for Oval Cable

UL File No. E-302794, E-22134



#### Applications:

- Now listed for use with SE/oval and SER/round cable

Cat. #	KO Size	Clamp Opening			Unit Qty.	Wt. Lbs. Per 100
		Min.	Max.	Width		
2631	3/4"	0.300"	0.075"	0.075"	50	9
2632	1"	0.350"	0.920"	0.920"	25	12
2633	1 1/4"	0.335"	0.960"	0.960"	10	22
2670	1 1/2"	0.350"	1.000"	1.000"	5	25
2671	2"	0.700"	1.300"	1.300"	10	40

### SERVICE ENTRANCE CABLE WATERTIGHT CONNECTORS – ZINC DIE CAST

UL File No. E-22134



#### Applications:

- Service Entrance Cable Watertight Connectors are used for sealing and terminating oval type SE or USE cable to a threaded entry of a watertight box or enclosure



Cat. #	Size	Description	Cable Dia.	Unit Qty.	Wt. Lbs. Per 100
WTC50U	1/2"	USE Cable 12/2	12 - 2	25	24
WTC75U	3/4"	USE Cable 12/3	12 - 3	25	38
WTC1004	1"	SE Cable 3 #4	0.500 - 0.800	10	21
WTC1006	1"	SE Cable 3 #6	0.440 - 0.700	10	21
WTC1008	1"	SE Cable 3 #8	0.400 - 0.630	10	22
WTC1251	1 1/4"	SE Cable 3 #1	0.660 - 1.120	10	38
WTC1252	1 1/4"	SE Cable 3 #2	0.570 - 0.940	5	38
WTC1253	1 1/4"	SE Cable 3 #3	0.510 - 0.850	5	39
WTC1501	1 1/2"	SE Cable 3 #1/0	0.705 - 1.195	5	57
WTC1502	1 1/2"	SE Cable 3 #2/0	0.740 - 1.235	5	57
WTC2001	2"	SE Cable 3 #1/0	0.705 - 1.195	5	88
WTC2002	2"	SE Cable 3 #2/0	0.705 - 1.235	10	93
WTC2003	2"	SE Cable 3 #3/0	0.830 - 1.415	5	87
WTC2004	2"	SE Cable 3 #4/0	0.850 - 1.540	5	85
WTC2004A	2"	SE Cable 3 #4/0	0.850 - 1.540	5	84

Service Entrance/  
Groundings

# Service Entrance & Grounding Fittings

## Straps & Service Entrance Caps

### PERFORATED STRAP – STEEL

10 Foot Coils



Cat. #	Description	Unit Qty.	Wt. Lbs. Per 100
3000	3/4" x 0.035 Galvanized 1/4" holes – 1/2" to 1" Centers	10	10

### SERVICE ENTRANCE STRAPS – STAMPED STEEL ZINC PLATED

#### Applications:

- Service Entrance Straps are used to fasten SE and USE type cable securely to a wall without damage to the cable jacket or the cable itself



Cat. #	Cable Range	Unit Qty.	Wt. Lbs. Per 100
<b>One Hole</b>			
NM700*	14/2 - 12/2	100	1.00
SE701	8/3 - 4/3	100	1.50
SE702	3/3 - 2/3	100	2.00
SE703	1/3 - 2/0	25	7.25
SE704	3/0 - 4/0	25	8.50
<b>Two Hole</b>			
SE711	8/3 - 4/3	100	2.50
SE712	3/3 - 2/3	100	3.00
SE713	1/3 - 2/0	25	4.00
SE714	3/0 - 4/0	25	4.50

\*Designed for #12 AWG 3-wire cable, this type cable is too small and is no longer service entrance cable. It is suitable for use with Romex or Underground Feeder Cable.

### SERVICE ENTRANCE CAPS – ALUMINUM DIE CAST

#### Applications:

- Used in overhead service entrance
- Mounts on top of EMT, rigid or IMC conduit
- Serves as a connecting point for service entrance wires
- Available in clamp type, set screw, threaded and mast type styles



UL File No. E-153721

cUL File No. E-23223



Cat. #	Size	Unit Qty.	Wt. Lbs. Per 100
<b>Clamp Type</b>			
EHC1	1/2"	15	11
EHC2	3/4"	10	21
EHC3	1"	7	27
EHC4	1 1/4"	5	32
EHC5	1 1/2"	3	53
EHC6	2"	8	89
EHC7	2 1/2"	3	300
EHC8	3"	3	322
EHC9	3 1/2"	2	513
EHC10	4"	2	519
<b>Threaded Type</b>			
EHT1	1/2"	15	19
EHT2	3/4"	10	24
EHT3	1"	7	24
EHT4	1 1/4"	5	28
EHT5	1 1/2"	3	51
EHT6	2"	8	81
EHT7	2 1/2"	3	272
EHT8	3"	3	298
EHT9	3 1/2"	2	538
EHT10	4"	2	541
<b>Set Screw Type</b>			
EHSS1	1/2"	15	15
EHSS2	3/4"	10	18
EHSS3	1"	7	24
EHSS4	1 1/4"	5	28
EHSS5	1 1/2"	3	58
EHSS6	2"	8	86
EHSS7	2 1/2"	3	308
EHSS8	3"	3	308
EHSS9	3 1/2"	2	517
EHSS10	4"	2	517
<b>Mast Type</b>			
EHMT1	1 1/4" - 2"	2	45
EHMT2	1 1/4" - 2"	1	75
EHMT3	1 1/2" - 2 1/2"	2	73
EHMT4	2" - 2 1/2"	1	75

# Service Entrance & Grounding Fittings

## Grounding Fittings

### GROUND CLAMP – ZINC DIE CAST

#### Applications:

- For bare or insulated wire or armoured grounding cable

UL File No. E-6225



Cat. #	Grounding Conductor Electrode Clamping Range	Lug Conductor Range	Unit Qty.	Wt. Lbs. Per 100
141DC	1/2", 3/4", 1"	#8 - #2	25	16

### GROUND CLAMP – BRONZE PLATED

#### Applications:

- For bare or insulated wire or armoured grounding cable

UL File No. E-6225



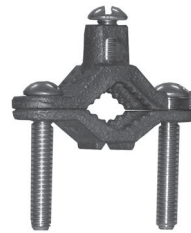
Cat. #	Grounding Conductor Electrode Clamping Range	Lug Conductor Range	Unit Qty.	Wt. Lbs. Per 100
141PDC	1/2", 3/4", 1"	#8 - #2	25	16

### GROUND CLAMPS – COPPER ALLOY FOR BARE WIRE

#### Applications:

- Used to connect bare copper wire to water pipe, re-bar, ground rod or copper water tubing for grounding
- Available with steel or bronze screws (bronze are listed for direct burial)
- Cast from high strength, highly conductive copper alloy

UL File No. E-6225



Cat. #	Grounding Conductor Electrode Clamping Range	Description	Unit Qty.	Wt. Lbs. Per 100
GCS13	1/2" - 1"	Bare Wire	100	12
GCS46	1 1/4" - 2"	Bare Wire	50	30
GCS610	2 1/2" - 4"	Bare Wire	12	74
GCB13	1/2" - 1"	Bronze Screw Direct Burial	100	18

### GROUND CLAMPS – COPPER ALLOY FOR ARMOURED CABLE

#### Applications:

- Used to connect armoured cable to water pipe for grounding
- Special pressure bar grips armoured cable insulation to decrease chances of grounding conductor being pulled out
- Cast from high strength, highly conductive copper alloy

#### 360 Degree Swivel Type

- Pressure bar swings 360 degrees for easy alignment
- Assembled with zinc plated steel screws
- Cast from high strength, highly conductive copper alloy

UL File No. E-6225



Cat. #	Grounding Conductor Electrode Clamping Range	Description	Unit Qty.	Wt. Lbs. Per 100
GCAB13	1/2" - 1"	Bronze Screw Direct Burial	25	24
GCAS13	1/2" - 1"	360 Degree Swivel	25	35

Service Entrance/  
Groundings

# Service Entrance & Grounding Fittings

## Grounding Fittings

### GROUND CLAMPS – COPPER ALLOY FOR RIGID CONDUIT

#### Applications:

- Used to connect grounding conductor in rigid conduit to water pipe for grounding
- Assembled with zinc plated steel screws
- Cast from high strength, highly conductive copper alloy

UL File No. E-6225



GCR13



GCRC13



GCRCS13

Cat. #	Grounding Conductor Electrode Clamping Range	Description	Unit Qty.	Wt. Lbs. Per 100
GCR13	1/2" - 1"	Rigid Clamp	50	26
GCRC13	1/2" - 1"	Regular Hub	50	26
GCRCS13	1/2" - 1"	360 Degree Swivel	50	26

### GROUND CLAMP – COPPER ALLOY FOR RIGID OR EMT CONDUIT 360 DEGREE SWIVEL

#### Applications:

- Used to connect grounding conductor in rigid or EMT conduit to water pipe for grounding
- Pressure bar clamps conduit in place and swings 360 degrees for easy alignment
- Assembled with zinc plated steel screws
- Cast from high strength, highly conductive copper alloy

UL File No. E-6225



Cat. #	Grounding Conductor Electrode Clamping Range	Description	Unit Qty.	Wt. Lbs. Per 100
GCRES13	1/2" - 1"	360 Degree Swivel	50	26

### GROUND CLAMPS – COPPER ALLOY FOR DIRECT BURIAL

#### Applications:

- Available in 1/2", 3/4" and 5/8" trade sizes
- Used to connect a grounding conductor to a driven ground rod
- Approved for direct burial in ground and concrete
- Assembled with bronze hexagon headed bolt
- Cast from high strength, highly conductive copper alloy

UL File No. E-6225



Cat. #	Grounding Conductor Electrode Clamping Range	Description	Unit Qty.	Wt. Lbs. Per 100
GRC1	1/2"	Regular	100	9
GRC58	5/8"	Ground Rod	50	9
GRC2	3/4"	Ground Rod	50	12

# Service Entrance & Grounding Fittings

## Grounding Fittings

### LAY-IN GROUNDING LUGS

#### Applications:

- Designed for quick and easy installation and are used to bond wires and surfaces in grounding applications

#### Features:

- Allows for quick and easy installation
- Used to bond wires and surfaces in grounding applications
- Available in either aluminum or copper material to suit customer specification
- Both aluminum and copper lugs are suitable for use with copper or aluminum conductors
- Heavy duty plated slotted or hex head screw for easy installation
- Each lug accepts a range of cable sizes

#### Certifications and Compliances:

- cULus Listed, File No. E-6225



#### Standard Materials and Finishes:

- Aluminum lay-in lug – zinc plated
- Copper lay-in lug – natural copper
- Set screw – zinc plated steel



Cat. #	Description	Conductor Range	Unit Qty.	Wt. Lbs. Per 100
LL414SA	Aluminum	#4 - #14	100	1.9
LL108SA	Aluminum	1/0 - #8 AWG	50	6.6
LL306SA	Aluminum	3/0 - #6 AWG	25	16.4
LL414C	Copper	#4 - #14 AWG	100	4.4
LL108C	Copper	1/0 - #8 AWG	50	15.9
LL306C	Copper	3/0 - #6 AWG	25	40.0

### SOLAR LAY-IN GROUNDING LUGS

#### Applications:

- The ideal choice for the quick installation of one continuous grounding conductor or as a jumper to multiple locations
- Just unscrew the set screw, lay in the cable and re-tighten, making it easy to retrofit or repair

#### Features:

- Tin plated copper for additional corrosion resistance
- For use with #4-14 cable
- Stainless steel slotted screw
- Suitable for direct burial and outdoor use
- Ideal for continuous grounding of solar PV panels
- Suitable for use with copper conductors only, solid or stranded

### INTERSYSTEM BONDING BRIDGES

#### Applications:

- Provides reliable intersystem bonding between power and communication grounding systems in commercial and residential applications

#### Features:

- For use in residential and commercial applications
- Can ground up to four systems to a single location
- Available in either zinc alloy or copper alloy material
- Snap-on plastic cover provides easy installation and protects from the elements
- Rated for use with solid and stranded copper conductors

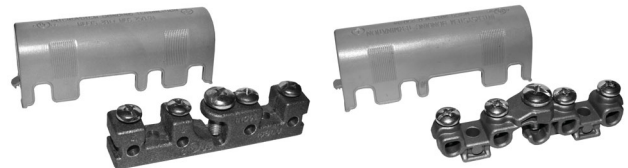
#### Certifications and Compliances:

- cULus Listed, File No. E-6225

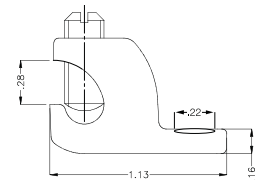
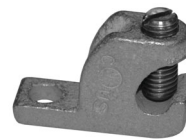


#### Standard Materials and Finishes:

- Zinc bonding bridge – natural
- Copper bonding bridge – natural
- Screws – stainless steel
- Protective snap-on cover – plastic



Cat. #	Description	Main Conductor Range	Aux. Conductor Range	Unit Qty.	Wt. Lbs. Per 100
BB414DC	Zinc Alloy	#6 - #2	#4 - #14	10	38.5
BB414C	Copper Alloy	#6 - #2	#4 - #14	10	65.4



#### Certifications and Compliances:

- cULus Listed
- UL File No. E-6225



#### Standard Materials and Finishes:

- Body – copper, tin plated
- Screw – stainless steel, natural

Cat. #	Description	Cable	Unit Qty.	Wt. Lbs. Per 100
SLL414T	Solar Grounding Lug	#4-14	100	5