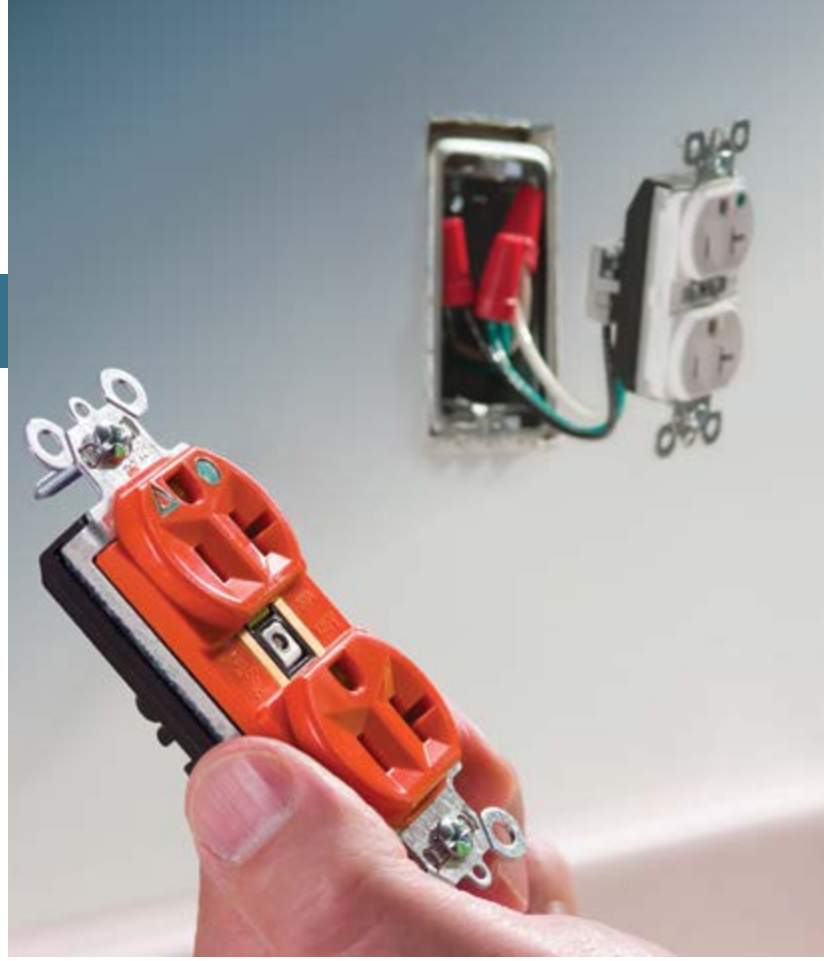


PASS & SEYMOUR®

PLUGTAIL® WIRING DEVICES



Meet every building's  
electrical requirements  
now and in the future.

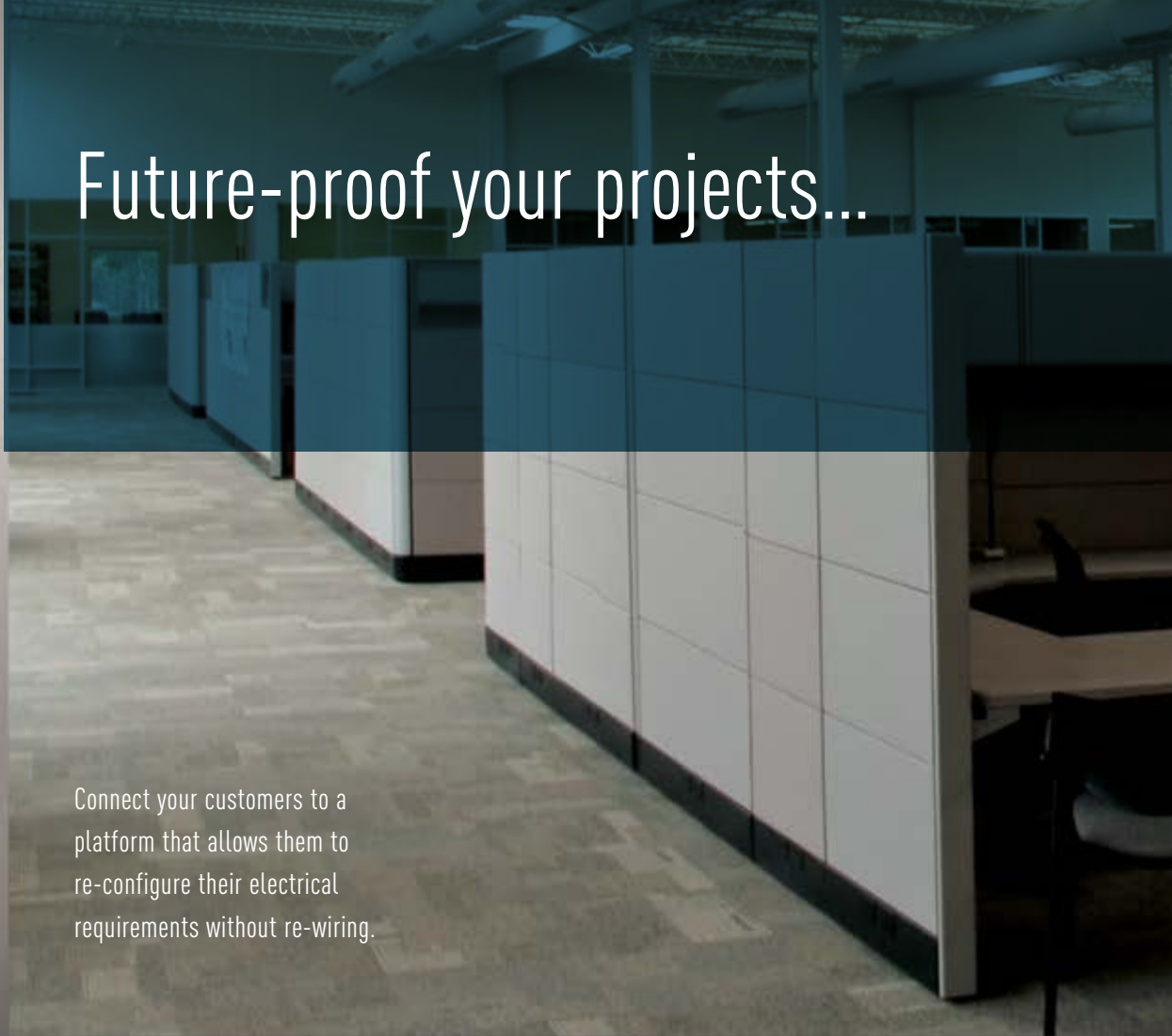


designed to be better.™

 **legrand**®

# Future-proof your projects...

Connect your customers to a platform that allows them to re-configure their electrical requirements without re-wiring.



# and your business with PlugTail® electrical wiring devices.

In the world of commercial wiring device installation, it's all about flexibility. For years now, PlugTail electrical wiring devices have been providing that flexibility in commercial buildings everywhere. Easy to install, change out, and upgrade, PlugTail allows you to continuously re-configure to meet a building's electrical requirements as the space transforms—without the time and expense of re-wiring.

It's a cost-effective, code-compliant, proven way to keep your customers connected to the future, while securing your reputation as a forward-thinking electrical contractor.

**CONNECT** WITH THE **FUTURE**



## Connect with the product line that keeps growing.

From sensors to switches, standard and controlled receptacles to surge protection devices. The constantly growing PlugTail family has you covered on every conceivable commercial job:

- Devices install in less than a minute
- No preparing, stripping, looping or taping
- Meet NEC and Energy Code requirements
- Makes changeouts and upgrades quick and easy

**Happier installers. Happier customers.** Because PlugTail installation's a lot easier on the knees and fingers, installers benefit. And because it makes it easy and affordable for your customers to transform their building layouts without expensive re-wiring, they're happier, too.



Changeouts, upgrades or complete transformations—

# A PlugTail® solution for every environment.



## HEALTHCARE

When it comes to healthcare installations, it's all about safety, simplicity, and dependability. That's what makes the PlugTail line so attractive. They not only meet stringent safety and compliance requirements, they make change outs and upgrades quick and easy.

PTTR8300PIW

### A SURGE IN POPULARITY

Our dependence on technology has made the protection of expensive equipment a priority in every environment. Be sure to upgrade all your customers to PlugTail Surge Protection Devices.



## EDUCATION & INSTITUTION

The installation and risk management benefits of PlugTail give you a competitive edge when bidding on institutional, college and university jobs. And when you consider that academic and government schedules often drive tight construction schedules, PlugTail makes good economic sense.

PTIG5362WSP



## RETAIL, OFFICE, & ENTERTAINMENT

In a world of fast setups, demanding deadlines, and increasing energy use, PlugTail is right at home. That's because they're dependable, safe, and incredibly easy to install. When you're dealing with tight timelines and budgets, you need PlugTail.

PTWSP250W



## HOSPITALITY & MULTIPLE DWELLING

The demands of investors and building owners are clear: they want code-compliant wiring devices that not only look good, but can stand up to the hard knocks of a hotel environment. And they want the job done now. Enter PlugTail devices.

PT2097NTLTRW

# A PlugTail® solution for every electrical requirement.



PT2097LA

## Spec Grade GFCIs

- **Self-test technology**—conducts automatic test every 3 seconds ensuring it's always ready to protect
- **Patented SafeLock™ Protection**—if critical components are damaged and ground fault protection is lost, power to the receptacle is disconnected.
- **The most durable GFCI available**—exceeds UL®943 voltage requirement; survives 100X the required UL 3kA/6kA voltage surge test cycles.
- **GFCI available in combination with an automatic sensor LED night light** for added safety and convenience.



PT2097HGNTLTRW

## Hospital Grade GFCIs

- **Tamper-resistant models** provide the only single-device solution to meet *NEC*® requirements for pediatric care areas.
- **Self-test technology**—conducts automatic test every 3 seconds ensuring it's always ready to protect
- **LED makes it easy to spot a tripped condition.**
- **LED Night Light/GFCI Combination** provides added safety.



### NAFTA-compliant

- Same functionality, performance and productivity of our standard PlugTail Devices



PT8300I



PT26352LA

## Extra Heavy-Duty Hospital Grade Receptacles

- **Circuit label on face** allows permanent circuit identification — an exclusive, patented feature.
- **Heavy-gauge, solid-brass strap.**
- **Receptacle connector features large brass terminal blades** for durable connections.
- **Illuminated and power-indicator models** are perfect for emergency-circuit applications.

## Spec Grade Receptacles

- **No exposed terminals** — increases safety in all phases of installation and use.
- **Tamper-Resistant Receptacle models** ensure child safety.
- **Heavy-gauge, plated-steel strap** wraps around body and face to form a rigid structure.
- **Auto-ground clip** ensures grounding or provides redundant grounding in pipe-and-wire applications.



PT8300ILRED



PTTR8300PIRED



## Receptacle Connector

- **Right-Angle Connector features pre-stripped leads** for faster installation.
- **Connector contacts are crimped and welded** to ensure solid electrical connections.
- **Fits flush with device** back to leave more room in the box.
- **Available with push-in connectors** for added productivity.





PTTR8300WSP



PT2623W

## Surge Protection Devices

- **Fit the same box and use the same tails** as our PlugTail GFCIs and receptacles for easy upgrades.
- **Automatically safeguards** electronic equipment from energy surges and spikes.
- **Flashing indicator** alert light and audible tone to signal a surge event.
- **Available in** Isolated Ground, Hospital Grade and Tamper-Resistant models.

## Spec Grade Switches

- **Shallow design** for easier installation.
- **Illuminated solutions** for pilot and lighted applications.
- **No exposed parts** for finger-safe application.
- **PlugTail Switches are available in 120/277 and 347V solutions.**



## Controllable Devices

**Our PlugTail Controllable Devices** and receptacles help you meet commercial requirements for plug load control, while saving your customers money and energy.



# A PlugTail<sup>®</sup> solution that connects you and your customers to the future.



PT20AC1W



PTWSP250W

## Extra Heavy-Duty Switches

- Available in 120/277.
- Switch connector features large brass terminal blades for durable connections.
- Chemical-resistant thermoplastics protect against oils, solvents, and harsh cleaners.
- Glass-reinforced nylon back body.
- One-piece nickel-plated strap.

## Sensors

- Fits existing PlugTail Switch box and Switch Connector for easy upgrades designed to save up to 60% in energy costs.
- Productivity-enhanced installation of PlugTail, combined with same design and function of our popular sensors line.
- Contributes to LEED certification and other energy-efficient project requirements.



## Switch/Sensor Connector

- Right-Angle Connector features pre-stripped leads for faster installation.
- Connector contacts are crimped and welded to ensure solid electrical connections.
- 3-wire solutions for single-pole; 4-wire solutions for 3-way applications.
- Available with push-in connectors for added productivity.

# PlugTail® Receptacles

Catalog Number	Description	Color	Rating		NEMA Config.
			A.	V.	
<b>Specification Grade Receptacles</b>					
PT5262A*	Extra Heavy-Duty	-, BK, GRY, I, LA, W	15A	125V	5-15R
PT5362A*		-, BK, GRY, I, LA, RED, W	20A	125V	5-20R
PTTR62*	Extra Heavy-Duty — Tamper-Resistant	BL, I, W	15A	125V	5-15R
PTTR63*		-, BK, GRY, I, LA, W	20A	125V	5-20R
PT26252*		-, BK, GRY, I, LA, RED, W	15A	125V	5-15R
PT26352*		-, BK, BL, GRY, I, LA, RED, W	20A	125V	5-20R
PTTR26262*	Fed Spec Grade Tamper-Resistant	-, BL, LA, W	15A	125V	5-15R
PTTR26362*		-, BK, I, LA, W	20A	125V	5-20R
PTIG26262*	Isolated Ground	OR, RED, W	15A	125V	5-15R
PTIG26362*		GRY, I, OR, W	20A	125V	5-20R
PT26262SC*	Fed Spec Grade Split Circuit	-, BK, GRY, LA, W	15A	125V	5-15R
PT26362SC*		BK, GRY, I, RED, W	20A	125V	5-20R
PTTR26262SC*	Split Circuit Tamper-Resistant	I, W	15A	125V	5-15R
PTTR26362SC*		-, LA, W	20A	125V	5-20R
PT5262*	Duplex — Fed Spec Grade	-, BK, GRY, I, RED, W	15A	125V	5-15R
PT5362*		-, BK, BL, GRY, I, LA, RED, W	20A	125V	5-20R
PTTR5262*	Duplex — Fed Spec Grade Tamper-Resistant	-, GRY, I, LA, RED, W	15A	125V	5-15R
PTTR5362*		-, BK, GRY, I, LA, W	20A	125V	5-20R
PT5262SC*	Duplex — Fed Spec Grade — Split Circuit	-, BK	15A	125V	5-15R
PT5362SC*		-, GRY, I, LA, W	20A	125V	5-20R
PTTR5262SC*	Duplex — Fed Spec Grade — Split Circuit Tamper-Resistant	W	15A	125V	5-15R
PTTR5362SC*		I, W	20A	125V	5-20R
PTIG5262*	Duplex — Isolated Ground	LA, OR, RED, W	15A	125V	5-15R
PTIG5362*		GRY, I, LA, OR, RED, W	20A	125V	5-20R
<b>Plug Load Controllable</b>					
PT5262CD*	Heavy-Duty Duplex — Dual Controlled	-, GRY, I, LA, W	15A	125V	5-15R
PT5362CD*		-, BK, GRY, I, LA, W	20A	125V	5-20R
PTTR5262CD*	Heavy-Duty Duplex — Dual Controlled Tamper Resistant	-, GRY, I, LA, W	15A	125V	5-15R
PTTR5362CD*		-, BK, GRY, I, LA, W	20A	125V	5-20R
PT5262SCCH*	Heavy-Duty Duplex — Half Controlled	-, GRY, I, LA, W	15A	125V	5-15R
PT5362SCCH*		-, BK, GRY, I, LA, W	20A	125V	5-20R
PTTR5262SCCH*	Heavy-Duty Duplex — Half Controlled Tamper Resistant	-, GRY, I, LA, W	15A	125V	5-15R
PTTR5362SCCH*		-, BK, GRY, I, LA, W	20A	125V	5-20R
PT26252CD*	Heavy-Duty — Dual Controlled	-, GRY, I, LA, W	15A	125V	5-15R
PT26352CD*		-, BK, GRY, I, LA, W	20A	125V	5-20R
PTTR26262CD*	Heavy-Duty — Tamper Resistant	-, GRY, I, LA, W	15A	125V	5-15R
PTTR26362CD*		-, BK, GRY, I, LA, W	20A	125V	5-20R
PT26252SCCT*	Heavy-Duty — Half Controlled	-, GRY, I, LA, W	15A	125V	5-15R
PT26352SCCT*		-, BK, GRY, I, LA, W	20A	125V	5-20R
PTTR26262SCCT*	Heavy-Duty — Half Controlled Tamper Resistant	-, GRY, I, LA, W	15A	125V	5-15R
PTTR26362SCCT*		-, BK, GRY, I, LA, W	20A	125V	5-20R



# PlugTail® Receptacles



Catalog Number	Description	Color	Rating		NEMA Config.
			A.	V.	
<b>Hospital Grade Receptacles</b>					
PT8200*	Extra Heavy-Duty	BK, GRY, I, LA, RED, W	15A	125V	5-15R
PT8200IL*	Extra Heavy-Duty — LED Illuminated	BK, GRY, I, LA, RED, W	15A	125V	5-15R
PT8300*	Extra Heavy-Duty	-, BK, BL, GRY, I, LA, RED, W	20A	125V	5-20R
PT8300IL*	Extra Heavy-Duty — LED Illuminated	-, GRY, I, LA, RED, W	20A	125V	5-20R
PT8200H*	Duplex — Fed Spec Grade	GRY, I, LA, RED, W	15A	125V	5-15R
PT8300H*		-, BK, GRY, I, LA, RED, W	20A	125V	5-20R
PTTR8200PI*	Extra Heavy-Duty Duplex — Tamper-Resistant Dual Power Indicator LED	-, GRY, I, LA, RED, W	15A	125V	5-15R
PTTR8300PI*		-, GRY, I, LA, RED, W	20A	125V	5-20R
PTTR8200*	Duplex — Fed Spec Grade — Tamper-Resistant	I, RED, W	15A	125V	5-15R
PTTR8300*		-, BK, GRY, I, LA, RED, W	20A	125V	5-20R
PTIG8200*	Duplex — Fed Spec Grade Isolated Ground	OR, RED	15A	125V	5-15R
PTIG8300*		I, OR, RED	20A	125V	5-20R
PTTR62H*	Extra Heavy-Duty — Tamper-Resistant	BK, I, RED, W	15A	125V	5-15R
PTTR63H*		-, BK, GRY, I, LA, RED, W	20A	125V	5-20R
PT26262HG*	Tamper-Resistant	I, RED, W	15A	125V	5-15R
PT26362HG*		I, LA, RED, W	20A	125V	5-20R
PTTR26262HG*		I, RED, W	15A	125V	5-15R
PTTR26362HG*		GRY, I, LA, RED, W	20A	125V	5-20R
<b>Surge Protection Devices — Audible Alarm with LED Indicator</b>					
PT5262*SP	Duplex — Extra Heavy-Duty	BL, GRY, I, W	15A	125V	5-15R
PT5362*SP		-, BK, BL, GRY, I, LA, W	20A	125V	5-20R
PTIG5262*SP	Duplex — Isolated Ground	OR, W	15A	125V	5-15R
PTIG5362*SP		BK, GRY, I, LA, OR, W	20A	125V	5-20R
PTTR5262*SP	Extra Heavy-Duty Duplex — Tamper-Resistant	-, W	15A	125V	5-15R
PTTR5362*SP		BL, GRY, I, LA, W	20A	125V	5-20R
PT8200*SP	Hospital Grade — Extra Heavy-Duty	-, BL, GRY, I, W	15A	125V	5-15R
PT8300*SP		-, BL, GRY, I, RED, W	20A	125V	5-20R
PTIG8200*SP	Extra Heavy-Duty Duplex Hospital Grade — Isolated Ground	LA, OR, RED	15A	125V	5-15R
PTIG8300*SP		-, BL, OR, RED	20A	125V	5-20R
PTTR8200*SP	Extra Heavy-Duty Duplex Hospital Grade — Tamper-Resistant	BL, RED, W	15A	125V	5-15R
PTTR8300*SP		BL, GRY, I, RED, W	20A	125V	5-20R

### Third-Party Compliance

cULus Listed, File Number E140596, Standard UL498, Federal Specification WC596 for receptacles and WS896 for switches.



### \*COLOR DESIGNATION

<b>I</b> Ivory	1. For Isolated Ground (IG) Receptacles, no color designation = Orange
<b>W</b> White	
<b>GRY</b> Gray	2. For all other receptacles, no color designation = Brown
<b>BK</b> Black	
<b>BL</b> Blue	
<b>RED</b> Red	3. Not all colors available for each model
<b>LA</b> Light Almond	



# PlugTail® GFCI Receptacles



Catalog Number	Description	Color	Rating		NEMA Config.
			A.	V.	
<b>Specification Grade GFCIs (Non feed-through type)</b>					
PT1597*	Duplex — Fed Spec Grade	GRY, I, LA, W	15A	125V	5-15R
PT2097*		-, BK, GRY, I, LA, RED, W	20A	125V	5-20R
PT1597NA*	NAFTA-Compliant Duplex — Fed Spec Grade	GRY, LA, W	15A	125V	5-15R
PT2097NA*		I, LA, RED, W	20A	125V	5-20R
PT1597NTLTR*	Tamper-Resistant LED Night Light Combination	I	15A	125V	5-15R
PT2097NTLTR*		I, W	20A	125V	5-20R
PT1597NTLTRNA*	NAFTA-Compliant Tamper-Resistant LED Night Light Combination	I, W	15A	125V	5-15R
PT2097NTLTRNA*		I, W	20A	125V	5-20R
PT1597TR*	Tamper-Resistant	GRY, I, LA, RED, W	15A	125V	5-15R
PT2097TR*		-, BK, GRY, I, LA, RED, W	20A	125V	5-20R
PT2097TRNA*	NAFTA-Compliant Tamper-Resistant	GRY, I, LA, W	20A	125V	5-20R
<b>Hospital Grade GFCIs (Non feed-through type)</b>					
PT1597HG*	Duplex	GRY, I, LA, RED, W	15A	125V	5-15R
PT2097HG*		-, BK, GRY, I, LA, RED, W	20A	125V	5-20R
PT2097HGNA	NAFTA-Compliant Duplex	GRY, I, LA, RED, W	20A	125V	5-20R
PT1597HGNTLTR*	Tamper-Resistant LED Night Light Combination	I, RED	15A	125V	5-15R
PT2097HGNTLTR*		GRY, I, LA, W	20A	125V	5-20R
PT1597HGNTLTRNA*	NAFTA-Compliant Tamper-Resistant LED Night Light Combination	I, W	15A	125V	5-15R
PT2097HGNTLTRNA*		I, W	20A	125V	5-20R
PT1597HGTR*	Tamper-Resistant	I, LA, RED, W	15A	125V	5-15R
PT2097HGTR*		BK, GRY, I, LA, RED, W	20A	125V	5-20R
PT2097HGNA*	NAFTA-Compliant Tamper-Resistant	GRY, I, LA, RED, W	20A	125V	5-20R

## Third-Party Compliance

cULus Listed, File Number E140596, Standard UL498, Federal Specification WC596 for receptacles and WS896 for switches.



## \*COLOR DESIGNATION

<b>I</b> Ivory	1. For Isolated Ground (IG) Receptacles, no color designation = Orange
<b>W</b> White	
<b>GRY</b> Gray	2. For all other receptacles, no color designation = Brown
<b>BK</b> Black	
<b>BL</b> Blue	
<b>RED</b> Red	3. Not all colors available for each model
<b>LA</b> Light Almond	

# PlugTail® Switches



Catalog Number	Description	Color	AMP	
<b>Industrial Grade Extra-Heavy Duty Toggle Switches (Chemical-Resistant)</b>				
PT15AC1*	Single-Pole	-, BK, I, LA, RED, W	15A	
PT15AC1*SL	Single-Pole, Illuminated	I, W		
PT15AC3*	Three-Way	LA, W		
PT15AC3*SL	Three-Way, Illuminated	W		
PT20AC1*	Single-Pole	-, BK, GRY, I, LA, RED, W	20A	
PT20AC1*SL	Single-Pole, Illuminated	CLR, I, W		
PT20AC3*	Three-Way	-, BK, GRY, I, LA, RED, W		
PT20AC3*SL	Three-Way, Illuminated	CLR, I, W		
<b>Specification Grade Paddle Switches</b>				
PT2601*	Single-Pole	-, BK, GRY, I, LA, W	15A	
PT2603*	Three-Way	-, BK, GRY, I, LA, W		
PT2621*	Single-Pole	-, BK, GRY, I, LA, RED, W	20A	
PT2625*	Single-Pole, Illuminated	I, W		
PT2623*	Three-Way	-, BK, GRY, I, LA, RED, W		
PT2626*	Three-Way, Illuminated	I, W		
<b>Wall Box Occupancy Sensors</b>				
Catalog Number	Description	Color	Voltage	Load
PTWSP250*	PIR Occupancy Sensor	I, W, GRY, LA	120/277VAC; 60Hz	800W Max. at 120V, 1200W Max. at 277V

### Third-Party Compliance

cULus Listed, File Number E140596, Standard UL498, Federal Specification WC596 for receptacles and WS896 for switches.

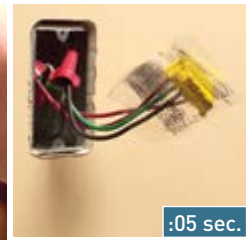
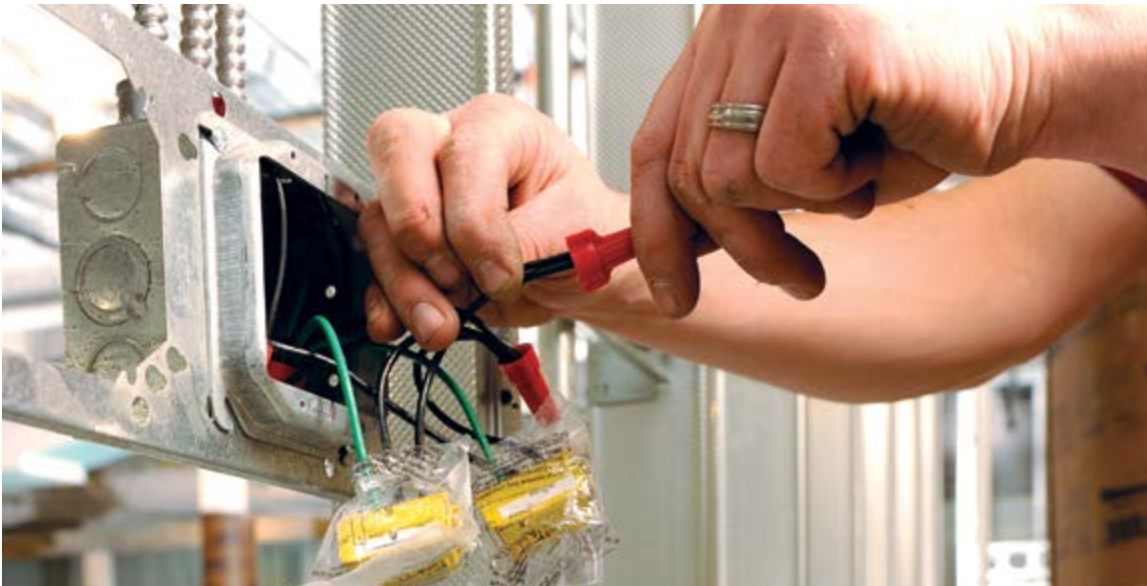
  **FSUL** (Fed Spec, UL Listed)

### \*COLOR DESIGNATION

<b>I</b> Ivory	<b>RED</b> Red
<b>W</b> White	<b>LA</b> Light Almond
<b>GRY</b> Gray	<b>CLR</b> Clear
<b>BK</b> Black	<b>—</b> Brown



# PlugTail® Electrical Wiring Devices — your connection for more productive and profitable commercial installations.



When it's time for finish wiring, just remove the plastic wrapper. Connect the PlugTail device with just one click. Mount the device to the box—and you're done.

## PlugTail® Receptacle Connectors



U.S. Patent No. 6,994,585



PT-Tester

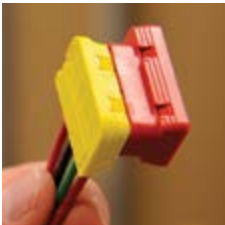
Catalog Number	Description
<b>Right Angle Connector</b>	
PTRA6STR	6" Stranded THHN12 pre-stripped leads, GRY
PTRA6SOL	6" Solid THHN12 pre-stripped leads, GRY
<b>NAFTA-Compliant Right Angle Connector</b>	
PTRA6STRNA	6" stranded THHN12 pre-stripped leads, GRY
PTRA6SOLNA	6" solid THHN12 pre-stripped leads, GRY
PTRA6STRBP	6" stranded THHN12 & 4-port push-in connectors, GRY
PTRA6SOLBP	6" solid THHN12 & 4-port push-in connectors, GRY
PTRA6STRG	6" stranded THHN12 & fork terminal on the ground, GRY
PTRA6SOLG	6" solid THHN12 & fork terminal on the ground, GRY
PTRA6STRNABL	6" stranded THHN12 pre-stripped leads & blue head (surge protection), BL
PTRA6STRNARED	6" solid THHN12 pre-stripped leads & red head (emergency power), RED
PTRA6STRXBB	6" stranded XHHW pre-stripped leads, GRY
<b>Other custom lengths, colors, and configurations available upon request.</b>	
<b>PlugTail Tester</b>	
PTTESTER	Enables testing of PlugTail Receptacle Connectors and installed receptacles



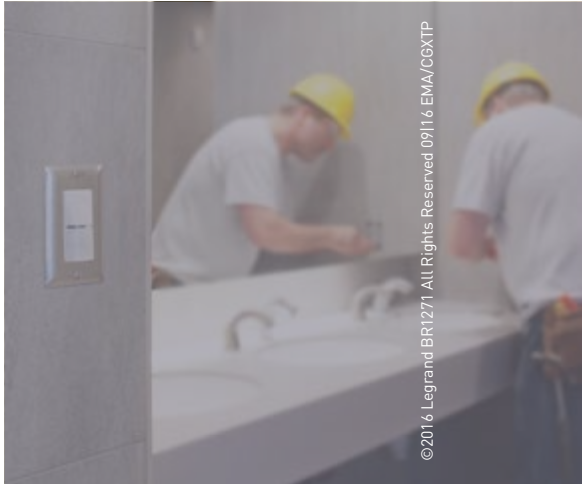
# PlugTail® Switch Connectors and Jumpers



Catalog Number	Description
<b>PlugTail Switch Connectors for Switches and Sensors</b>	
<b>PTS6STR3</b>	Single-pole — w/6" stranded THHN12 pre-stripped leads
<b>PTS6SOL3</b>	Single-pole — w/6" solid THHN12 pre-stripped leads
<b>PTS6STR3277</b>	Single-pole — w/6" stranded THHN12 pre-stripped leads for 277V applications
<b>PTS6SOL3277</b>	Single-pole — w/6" solid THHN12 pre-stripped leads for 277V applications
<b>PTS6STR4</b>	Three-way — w/6" stranded THHN12 pre-stripped leads
<b>PTS6SOL4</b>	Three-way — w/6" solid THHN12 pre-stripped leads
<b>PTS6STR4277</b>	Three-way — w/6" stranded THHN12 pre-stripped leads for 277V applications
<b>PTS6SOL4277</b>	Three-way — w/6" solid THHN12 pre-stripped leads for 277V applications
<b>PTS6STR3BP</b>	Single-pole — w/6" stranded THHN12 pre-stripped leads w/ 4-port push-in connectors
<b>PTS6SOL3BP</b>	Single-pole — w/6" solid THHN12 pre-stripped leads w/ 4-port push-in connectors
<b>PTS6STR3277BP</b>	Single-pole — w/6" stranded THHN12 pre-stripped leads for 277V applications w/4-port push-in connectors
<b>PTS6STR4277BP</b>	Single-pole — w/6" solid THHN12 pre-stripped leads for 277V applications w/ 4-port push-in connectors
<b>PTS6STR4BP</b>	Three-way — w/6" stranded THHN12 pre-stripped leads w/ 4-port push-in connectors
<b>PTS6SOL4BP</b>	Three-way — w/6" solid THHN12 pre-stripped leads w/ 4-port push-in connectors



Catalog Number	Description
<b>PlugTail Jumper</b>	
<b>PTJ</b>	PlugTail Tail cover for rough in
<b>PTJ5</b>	PlugTail Tail cover for rough in; 5-pack



©2016 Legrand BR1271 All Rights Reserved 09116 EMA/CGXTP

designed to be better.™



**Electrical Wiring Systems**

P.O. Box 4822  
Syracuse, NY 13221-4822  
800.776.4035  
[www.legrand.us/PassandSeymour](http://www.legrand.us/PassandSeymour)

570 Applewood Crescent  
Vaughan, Ontario L4K 4B4  
905.738.9195  
[www.legrand.ca](http://www.legrand.ca)

For additional technical or application-specific information, call 800-223-4185 or visit our website at [www.legrand.us/PassandSeymour](http://www.legrand.us/PassandSeymour). We're eager to put our expertise to work for you.

FOLLOW US

